



# VAN BODY PACKAGES

MOBILE WORKSPACE SYSTEMS  
2020 GUIDE





# WHY EZ STAK FOR YOUR TOUGHEST JOBS

Customers tell us why they trust us to be their fleet upfit solutions partner:



## QUALITY MANUFACTURING

Quality manufacturing, design and engineering are what our customers value most.

### Tough

- ▶ Built tough to take the abuse of real-time use
- ▶ Last on average 12 years
- ▶ No bending, sagging or jamming
- ▶ EZ latch storage systems open and close with ease

### Lightweight

- ▶ 40% lighter than steel
- ▶ Aluminum drawers and cabinets ensure a quiet ride
- ▶ Reduce fuel costs
- ▶ Increase payload

### Configurable

- ▶ Choose from our standard product lines for your desired workspace
- ▶ Easy to visualize your interior
- ▶ Easy to approve pre-build



## ONE-ON-ONE CONSULTATION

Do you have specific workspace requirements? No problem.

- ▶ We listen to understand your needs
- ▶ On-site visits ensure accuracy and precision
- ▶ In-house engineers utilize SolidWorks™ 3D Technology
- ▶ Work with you through specifications, design, and budget



## EXCEPTIONAL CUSTOMER CARE TEAM

Our customer care team is always available by phone. We ensure great service through every step:

- ▶ Quoting
- ▶ Production
- ▶ Quick Ship Delivery
- ▶ Follow up



(USA) 630.994.3300  
(Canada) 613.530.3419

# HOW TO BUY YOUR PACKAGE

Configure your workspace with a perfect fit — in three easy steps:

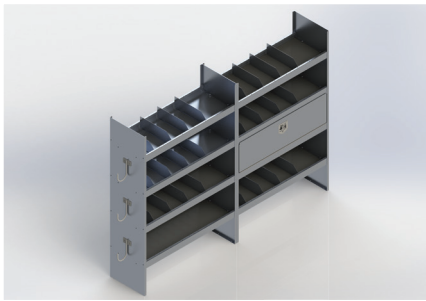
## 1 SELECT YOUR VEHICLE:

Provide the specifications of your commercial van.



## 2 CHOOSE THE PACKAGE THAT'S RIGHT FOR YOU:

Select one of our pre-configured packages on pages 4 and 5.



## 3 ADD YOUR ACCESSORIES:

Customize your workspace with any of the accessories shown on page 7.

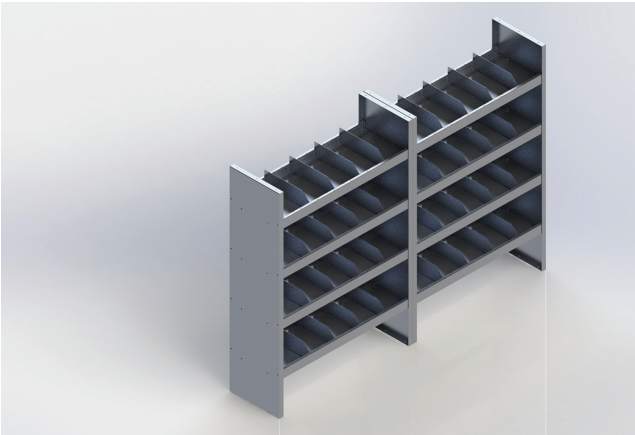


# CHOOSE YOUR PACKAGE

All packages are available to fit 12’ and 14’ van lengths.

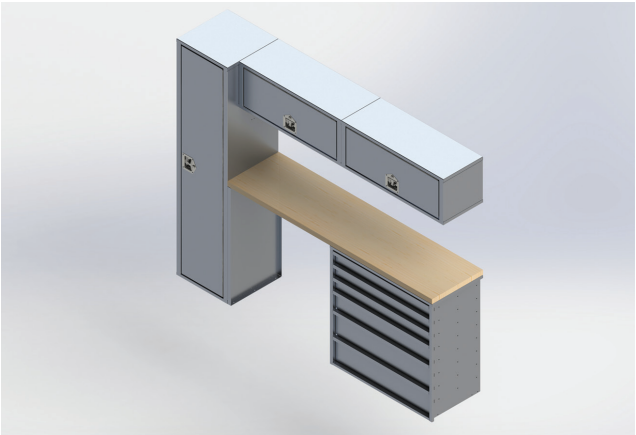
## PACKAGE: A

Order number: 1151637



**Driver Side:** 72”H x 96”W x 18”D. Approx. weight 205lb

Item	QTY	Description
Shelf Unit	1	72”H x 48”W x 18”D
Shelf Unit	1	72”H x 48”W x 18”D

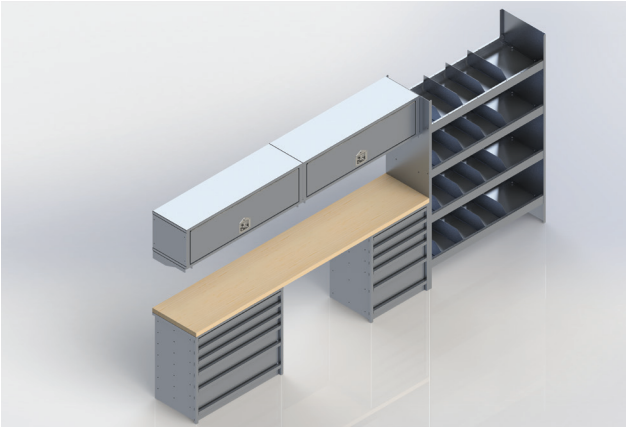


**Passenger Side:** 72”H x 86”W x 18”D. Approx. weight 340lb

Item	QTY	Description
Locker Unit	1	72”H x 14”W x 18”D
Chest Unit	2	14”H x 36”W x 14”D
Countertop	1	72”W Maple Hardwood Top
Drawer Unit	1	36”H x 36”W x 18”D

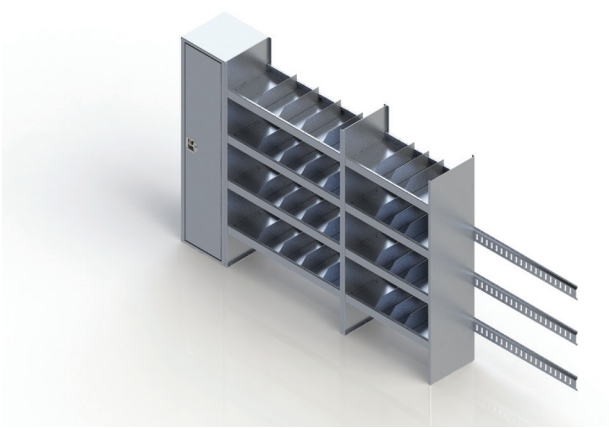
## PACKAGE: B

Order number: 1151638



**Driver Side:** 72”H x 144”W x 18”D. Approx. weight 505lb

Item	QTY	Description
Shelf Unit	1	72”H x 48”W x 18”D
Chest Unit	2	14”H x 48”W x 14”D
Countertop	1	96”W Maple Hardwood Top
Drawer Unit	1	36”H x 24”W x 18”D
Drawer Unit	1	36”H x 36”W x 18”D

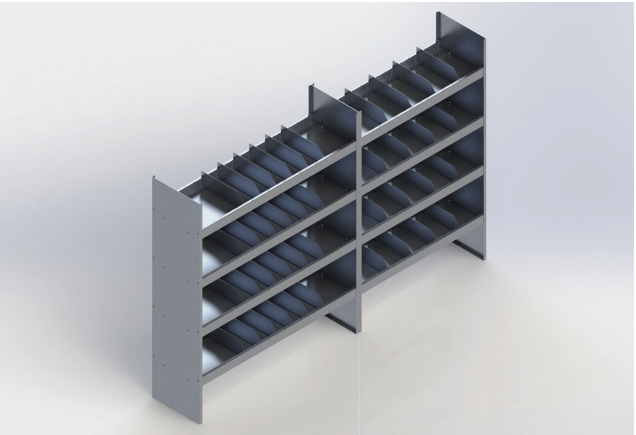


**Passenger Side:** 72”H x 132”W x 18”D. Approx. weight 230lb

Item	QTY	Description
Locker Unit	1	72”H x 18”W x 18”D
Shelf Unit	1	72”H x 48”W x 18”D
Shelf Unit	1	72”H x 36”W x 18”D
E-Tracks	3	30”W

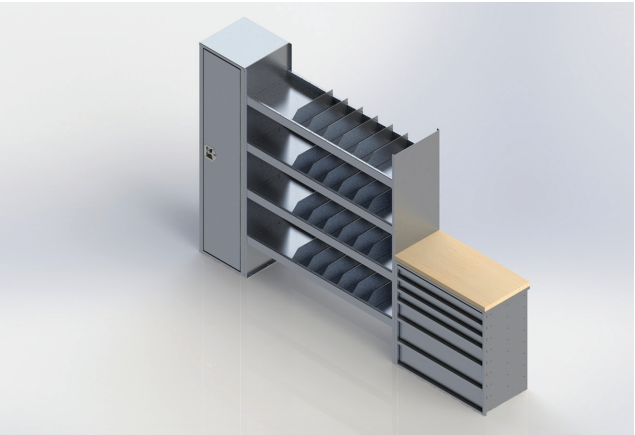
## PACKAGE: C

Order number: 1151639



**Driver Side:** 72”H x 108”W x 18”D. Approx. weight 230lb

Item	QTY	Description
Shelf Unit	1	72”H x 48”W x 18”D
Shelf Unit	1	72”H x 60”W x 18”D

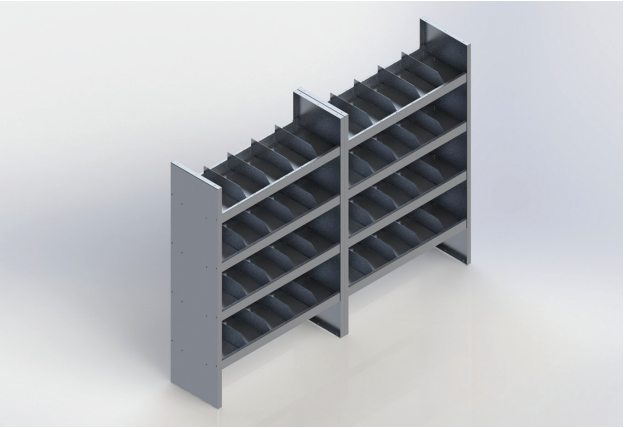


**Passenger Side:** 72”H x 114”W x 18”D. Approx. weight 380lb

Item	QTY	Description
Locker Unit	1	72”H x 18”W x 18”D
Shelf Unit	1	72”H x 60”W x 18”D
Drawer Unit	1	36”H x 36”W x 18”D
Countertop	1	36”W Maple Hardwood Top

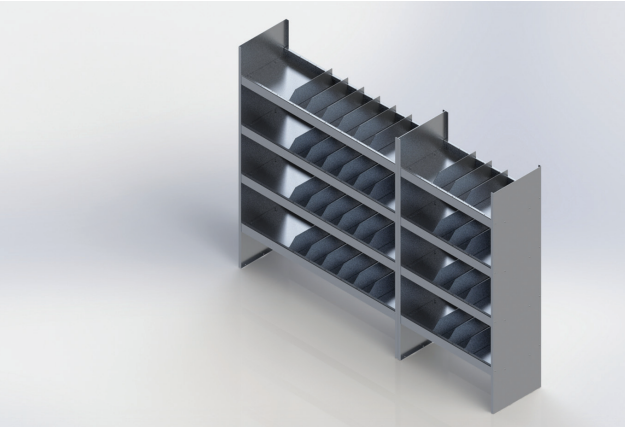
## PACKAGE: D

Order number: 1151640



**Driver Side:** 72”H x 96”W x 18”D. Approx. weight 190lb

Item	QTY	Description
Shelf Unit	1	72”H x 48”W x 18”D
Shelf Unit	1	72”H x 48”W x 18”D



**Passenger Side:** 72”H x 96”W x 18”D. Approx. weight 210lb

Item	QTY	Description
Shelf Unit	1	72”H x 60”W x 18”D
Shelf Unit	1	72”H x 36”W x 18”D

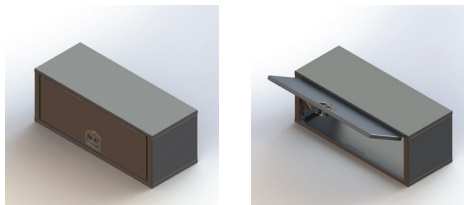


# BUILD YOUR OWN

These individual components can be easily reconfigured to suit your exact needs.

## CHEST

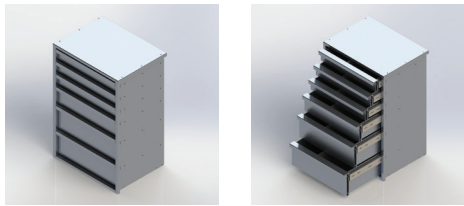
EZ STAK chest units come with standard T-handles, gas springs and wall mounting brackets.



14"H x 36"W x 14"D  
**Order code: CH-14-36-14-001**  
14" H x 48"W x 14"D  
**Order code: CH-14-48-14-001**

## DRAWERS

EZ STAK drawer units come with adjustable dividers so you can easily organize small parts and tools with no sagging or jamming.

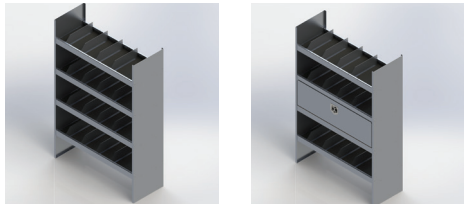


36"H x 24"W x 18"D  
**Order code: DU-36-24-18-012**  
36" H x 36"W x 18"D  
**Order code: DU-36-36-18-008**

- ▶ 200lb slides
- ▶ Drawer sizes 3-4", 1-6", 2-8"
- ▶ 2 dividers per drawer

## SHELVING

EZ STAK shelving units come with four adjustable dividers per shelf, allowing for multiple combinations and security.



72"H x 36"W x 18"D  
**Order code: SU-72-36-18-003**  
72"H x 48"W x 18"D  
**Order code: SU-72-48-18-011**  
72"H x 60"W x 18"D  
**Order code: SU-72-60-18-004**

### Optional Features:

- ▶ Hinged down locking door, rubber matting

## LOCKERS

EZ STAK locker units come with standard T-handles, creating a convenient way to store clothing and tall and narrow items.



72"H x 14"W x 18"D  
**Order code: LK-72-14-18-002**  
72"H x 18"W x 18"D  
**Order code: LK-72-18-18-016**

### Standard Features:

- ▶ One shelf placed 12" from top, locking T-handle and 3 hooks

### Optional Features:

- ▶ Shelves, rubber matting, coat rod, additional hooks

## COUNTER TOP

EZ STAK counter tops are 1.5 inches thick and made with solid maple hardwood. They provide a resilient work surface for a multitude of tasks.



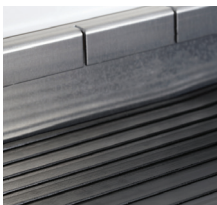
36"W x 18"D  
**Order code: CT-02-36-18-00**  
72"W x 18"D  
**Order code: CT-02-72-18-00**  
96"W x 18"D  
**Order code: CT-02-96-18-00**

# ADD YOUR ACCESSORIES

Be sure to include some of these optional accessories to make your mobile workspace complete.

## RUBBER MATTING

Lining shelves and drawers with rubber matting will minimize noise and sliding contents.



## POWDER COATING

Want your cabinets to match your company brand colors? We can do that.



## LARGE HOOKS

Add larger hooks for jackets or equipment such as power cords.



## END PANELS

Support a free-standing workbench top with end panels.



## DIVIDERS

Add additional dividers to your units. Egg-sized dividers are also available to keep smaller parts organized.



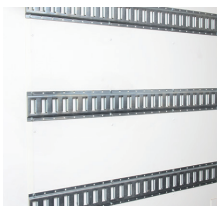
## EXTERIOR CABINET

Exterior cabinet comes with lift-up or barn doors, a rollout tray, and a vent tube.



## ETRACKS

Add Etracks to the driver or passenger side of your van.



## HINGE DOWN DOORS

Get extra security by adding locking doors to any chest or shelving unit.



# LIFETIME WARRANTY

EZ STAK now provides a lifetime warranty\* on all newly purchased products we manufacture.

That means when you make a purchase, you'll also get a promise: If you remain the original owner of the product, and that product ever becomes defective due to manufacturing, materials or workmanship, EZ STAK will fix or replace it for free.

*\*Some conditions apply. Please see website for details.*







[www.ezstak.com](http://www.ezstak.com)



## ABOUT EZ STAK

Founded in 1998, EZ STAK is an industry-leading manufacturer of storage systems for work trucks, service bodies, vans and trailers.

Our durable and lightweight aluminum products create organized, efficient and secure mobile workspaces.

Customers include municipalities in the U.S. and Canada, as well as large corporations in the utility, telecom, cable, oil and gas, and construction industries.

## WORK READY. MADE EZ.

Look for a dealer near you at: [www.ezstak.com](http://www.ezstak.com)

To order your cutaway van package, call our customer care team today:

(USA) 630.994.3300

(Canada) 613.530.3419

## EZ STAK LLC

20400 Old Rome State Road  
Watertown, NY 13601  
630.994.3300

## EZ STAK INC.

638 Fortune Crescent  
Kingston, ON K7P 2T3  
613.530.3419



Proudly manufactured  
in the USA



1.4.48 Customer  
Care Program