



EZ STAK

PH:(613)530.3419
FAX:(613)546.5489

INSTALL INSTRUCTION

SD

REVISION

I-1

DATE

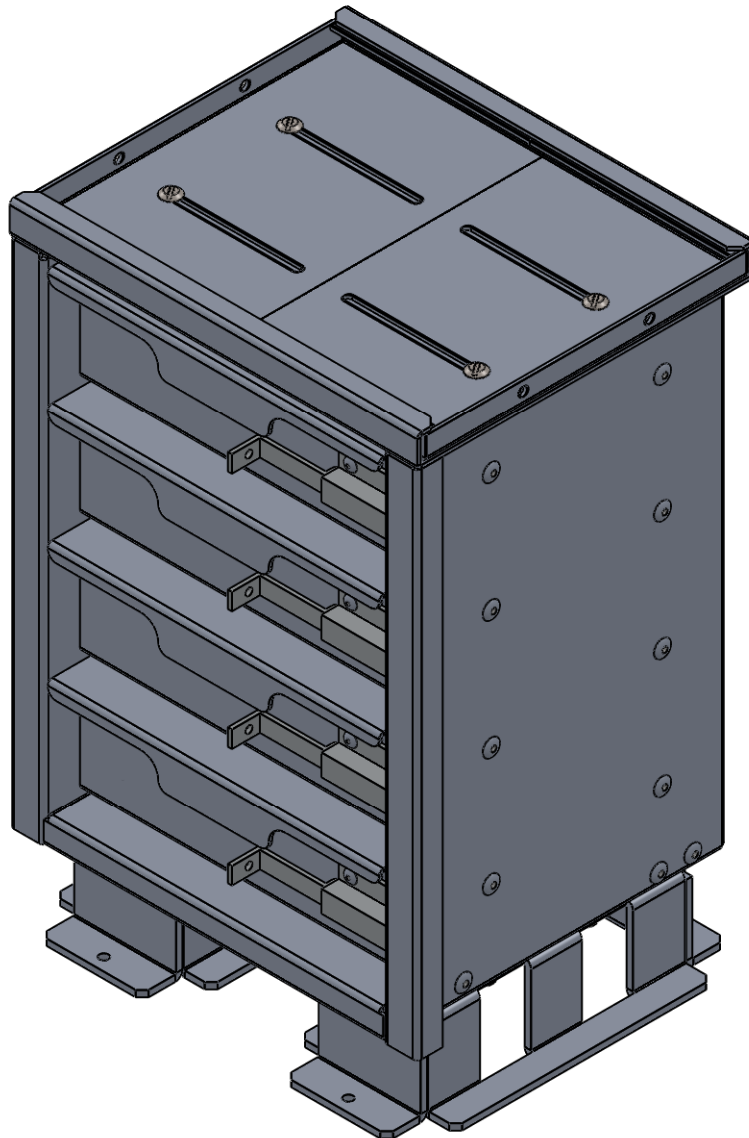
12/12/17

PROPRIETARY AND CONFIDENTIAL

THE INFORMATION CONTAINED IN THIS DRAWING IS THE SOLE PROPERTY OF EZSTAK LLC. ANY REPRODUCTION IN PART OR AS A WHOLE WITHOUT THE WRITTEN PERMISSION OF EZSTAK LLC IS PROHIBITED.

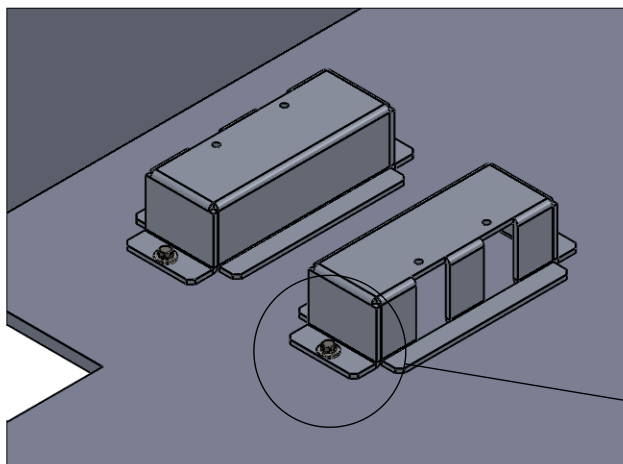
SHEET 1 OF 3

SD INSTALLATION INSTRUCTIONS



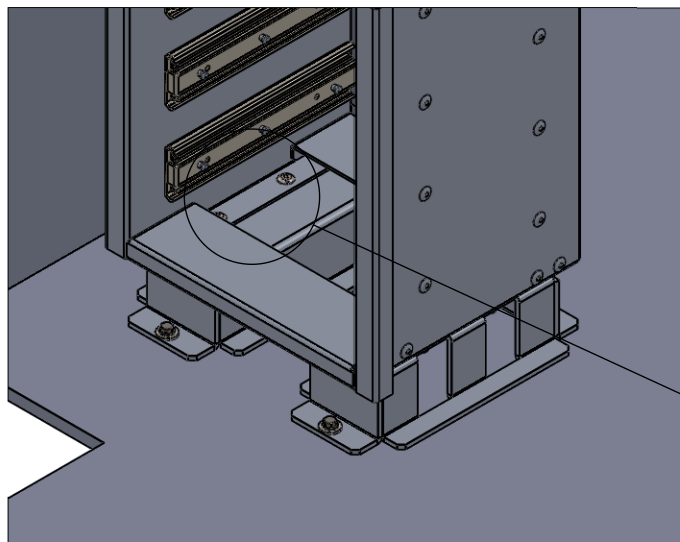
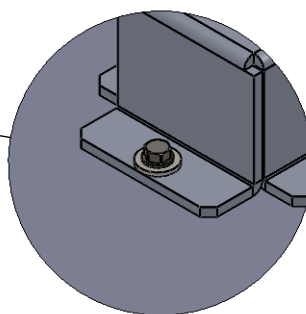


STEP 1:
REMOVE DRAWERS USING TABS ON SLIDES

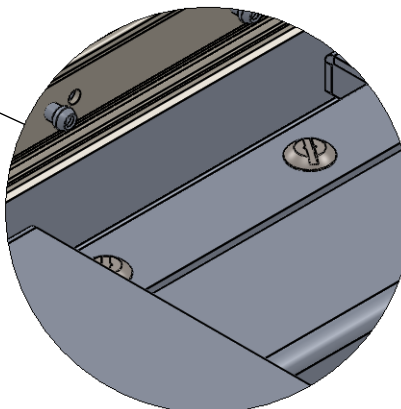


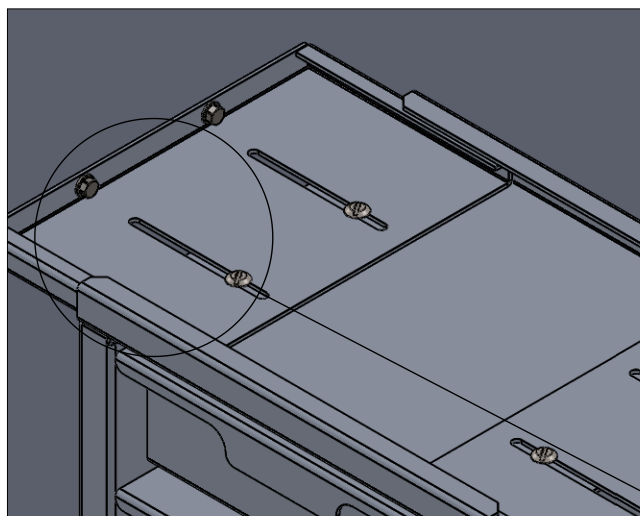
STEP 2:
ALIGN UNIT IN POSITION THEN REMOVE THE CABINET AND USE 1/4" SELF-TAPPING SCREWS AND WASHERS TO FASTEN FEET TO THE FLOOR.

ENSURE SCREWS WILL NOT DAMAGE FUEL TANKS, FUEL LINES, BRAKE LINES, WIRING, ETC.



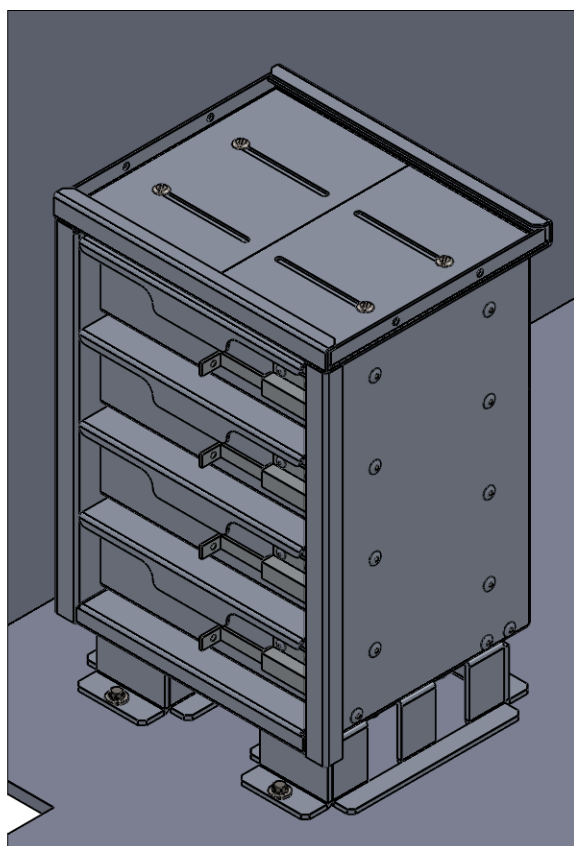
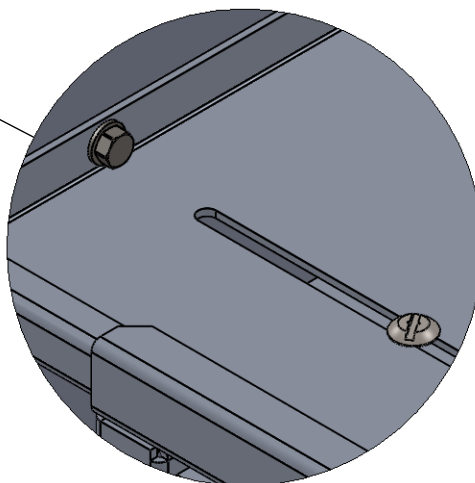
STEP 3:
REATTACH THE CABINET USING 1/4-20 BOLTS AND NYLOC NUTS





STEP 4:
EXTEND THE ADJUSTABLE TOP PANELS BY LOOSENING THE BOLTS IN THE SLOTS AND USE ¼" SELF-TAPPING SCREWS TO FASTEN THEM TO THE WALL USING THE MOUNTING HOLES IN THE PANELS. RETIGHTEN THE BOLTS TO SECURE THE PANELS.

ENSURE SCREWS WILL NOT DAMAGE FUEL TANKS, FUEL LINES, BRAKE LINES, WIRING, ETC.



STEP 5:
REINSTALL THE DRAWERS