



EZ STAK

PH:(613)530.3419
FAX:(613)546.5489

INSTALL INSTRUCTION

DU

REVISION

I-1

DATE

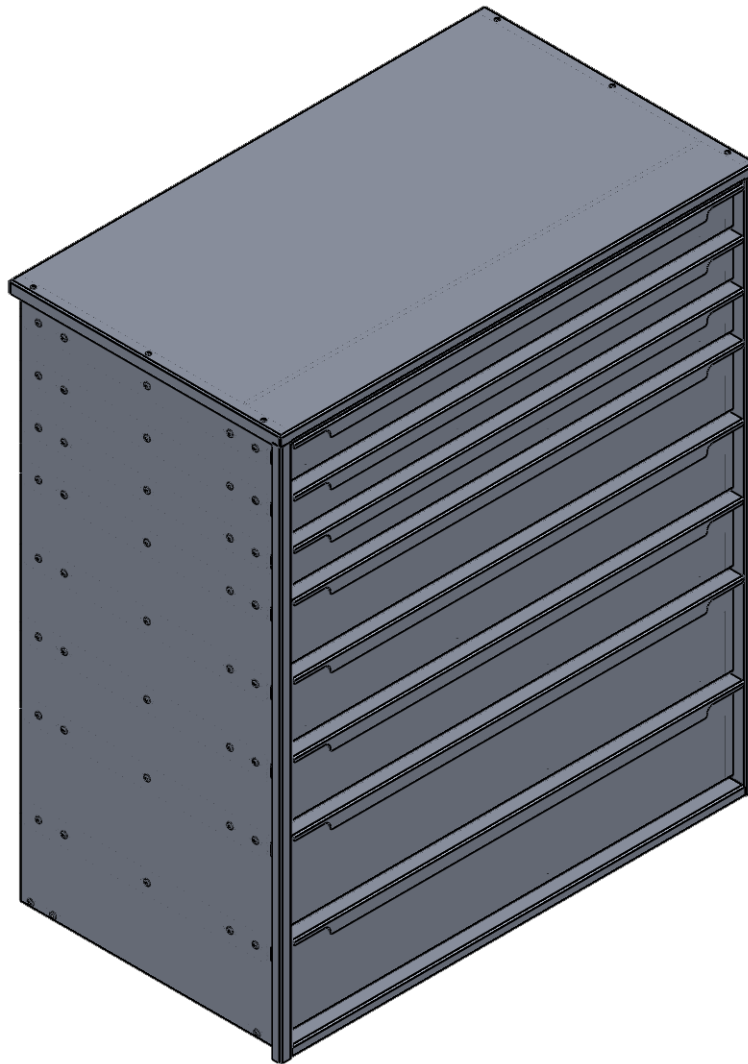
12/12/17

PROPRIETARY AND CONFIDENTIAL

THE INFORMATION CONTAINED IN THIS DRAWING IS THE SOLE PROPERTY OF EZSTAK LLC. ANY REPRODUCTION IN PART OR AS A WHOLE WITHOUT THE WRITTEN PERMISSION OF EZSTAK LLC IS PROHIBITED.

SHEET 1 OF 3

DU INSTALLATION INSTRUCTIONS





EZ STAK

PH:(613)530.3419
FAX:(613)546.5489

INSTALL INSTRUCTION

DU

REVISION

I-1

DATE

12/12/17

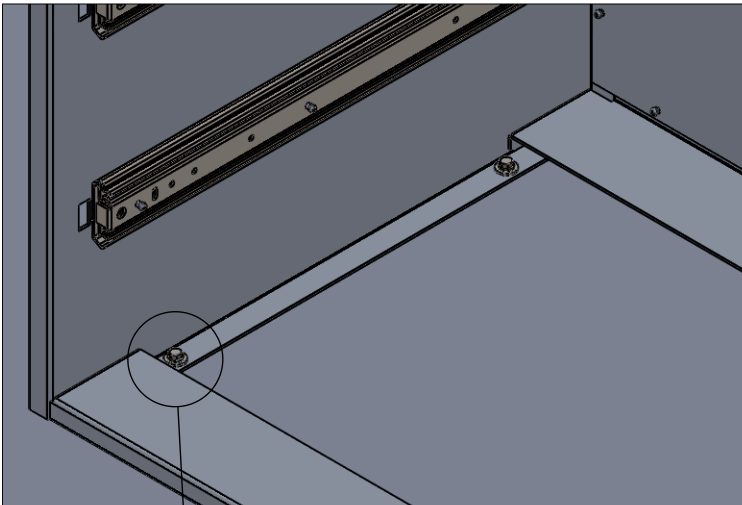
PROPRIETARY AND CONFIDENTIAL

THE INFORMATION CONTAINED IN THIS DRAWING IS THE SOLE PROPERTY OF EZSTAK LLC. ANY REPRODUCTION IN PART OR AS A WHOLE WITHOUT THE WRITTEN PERMISSION OF EZSTAK LLC IS PROHIBITED.

SHEET 2 OF 3

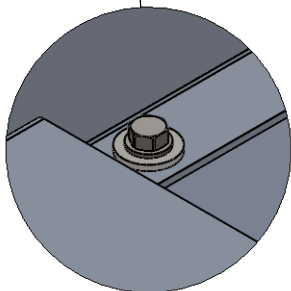


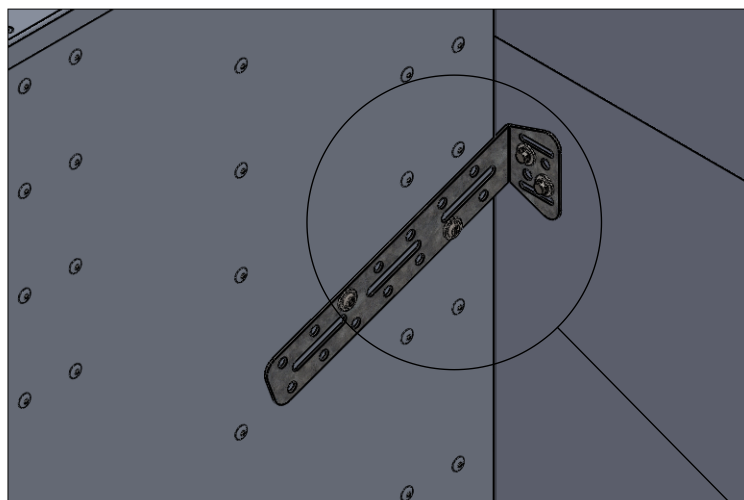
STEP 1:
REMOVE DRAWERS USING TABS ON SLIDES



STEP 2:
ALIGN UNIT IN POSITION AND USE ¼" SELF-TAPPING SCREWS AND WASHERS TO FASTEN CABINET TO THE FLOOR THROUGH THE HOLES IN THE BOTTOM FLANGE OF THE SIDE PANELS.

ENSURE SCREWS WILL NOT DAMAGE FUEL TANKS, FUEL LINES, BRAKE LINES, WIRING, ETC.

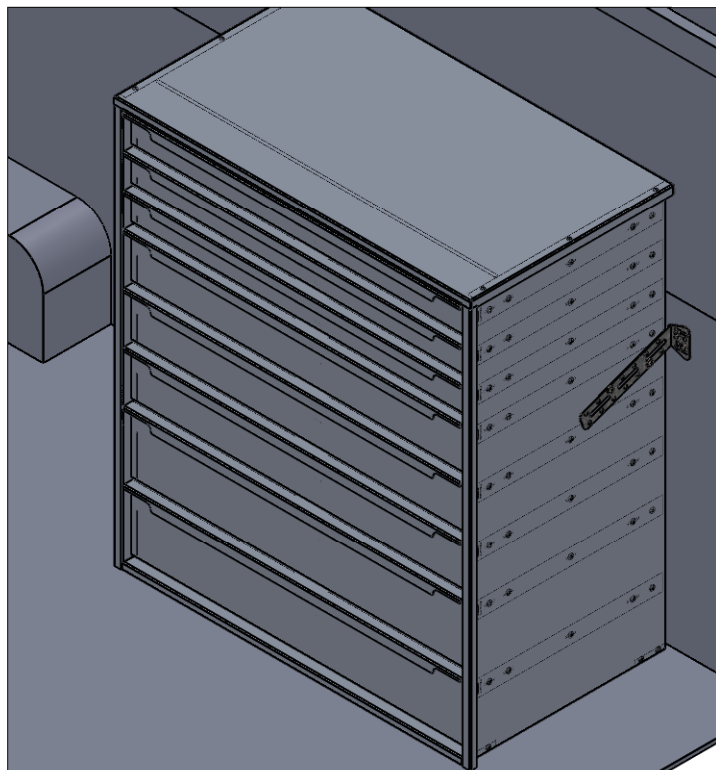
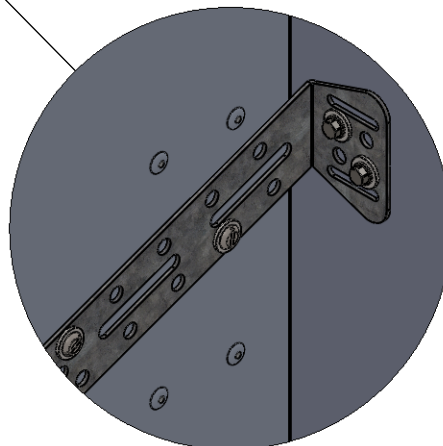




STEP 3:
USE AN ANGLED 90° BRACKET TO SECURE THE UNIT TO THE SIDE WALL OF THE VEHICLE.

PREDRILL HOLES AND USE ¼-20 TRUSS HEAD BOLTS, FLAT WASHERS, AND NYLOC NUTS TO ATTACH TO THE CABINET AND ¼" SELF-TAPPING SCREWS WITH FLAT WASHERS TO FASTEN TO THE WALL.

ENSURE THAT BOLT POSITION WILL NOT INTERFERE WITH DRAWER SLIDES AND SCREWS WILL NOT DAMAGE FUEL TANKS, FUEL LINES, BRAKE LINES, WIRING, ETC.



STEP 4:
REINSTALL THE DRAWERS