



**EZ STAK**

PH:(613)530.3419  
FAX:(613)546.5489

## INSTALL INSTRUCTION

ECO-SD

REVISION

I-1

DATE

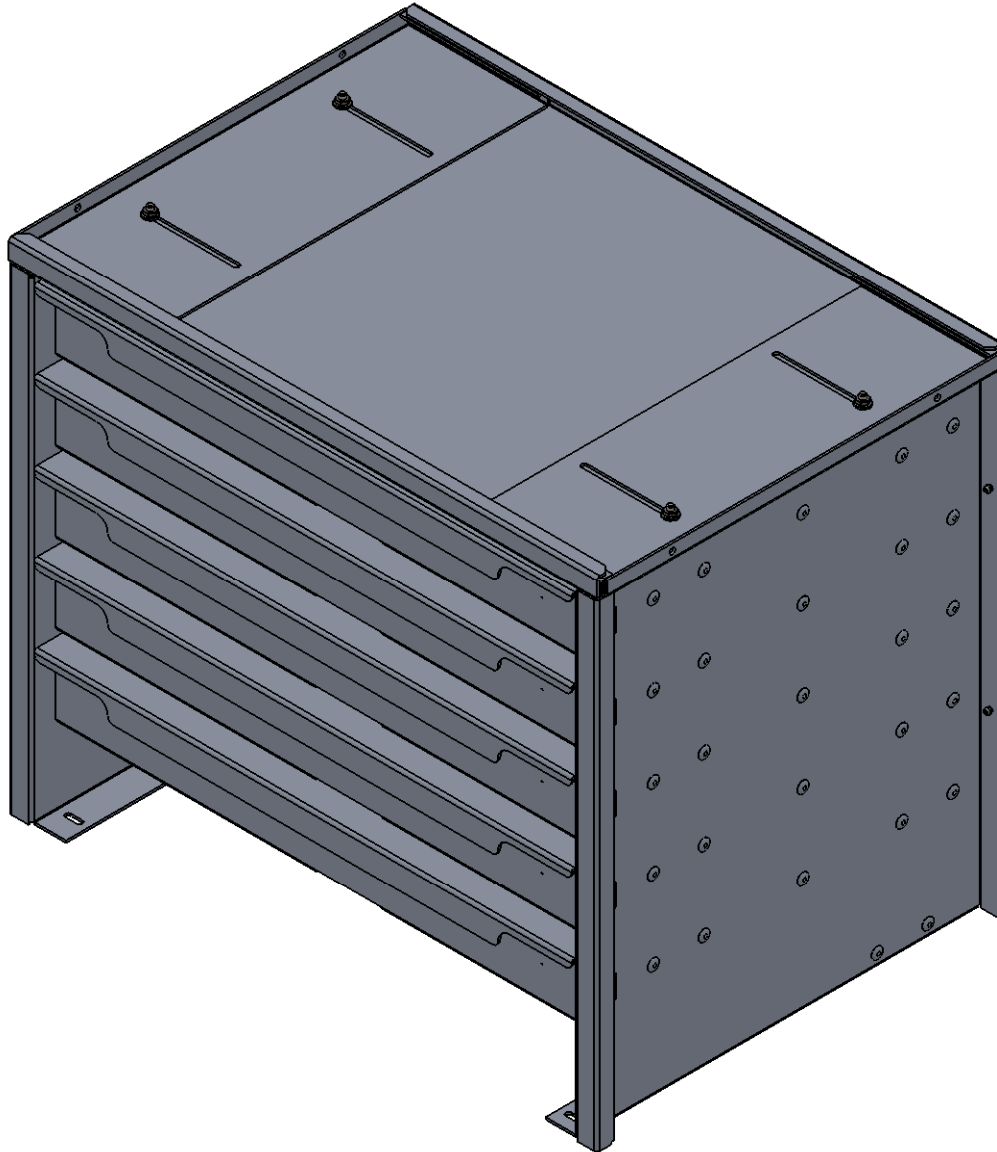
12/12/17

## PROPRIETARY AND CONFIDENTIAL

THE INFORMATION CONTAINED IN THIS DRAWING IS THE SOLE PROPERTY OF EZSTAK LLC. ANY REPRODUCTION IN PART OR AS A WHOLE WITHOUT THE WRITTEN PERMISSION OF EZSTAK LLC IS PROHIBITED.

SHEET 1 OF 3

# ECO-SD INSTALLATION INSTRUCTIONS



**EZ STAK**PH:(613)530.3419  
FAX:(613)546.5489**INSTALL INSTRUCTION****ECO-SD**

REVISION

DATE

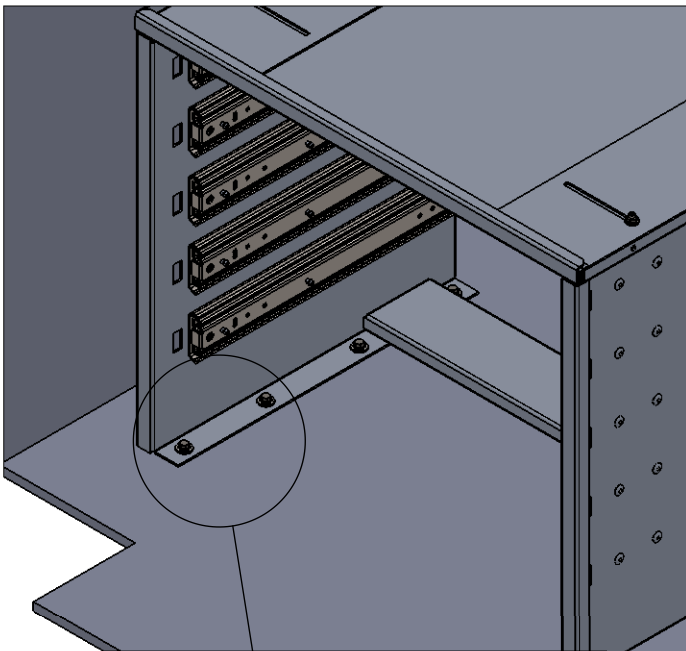
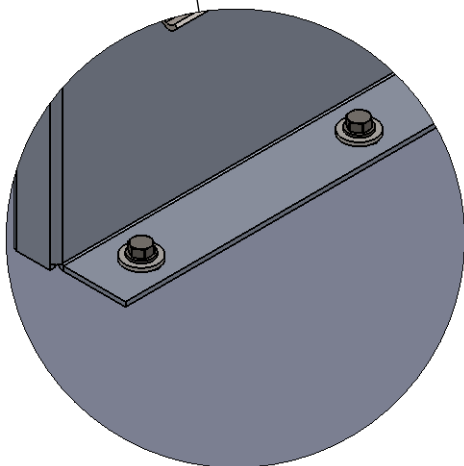
I-1

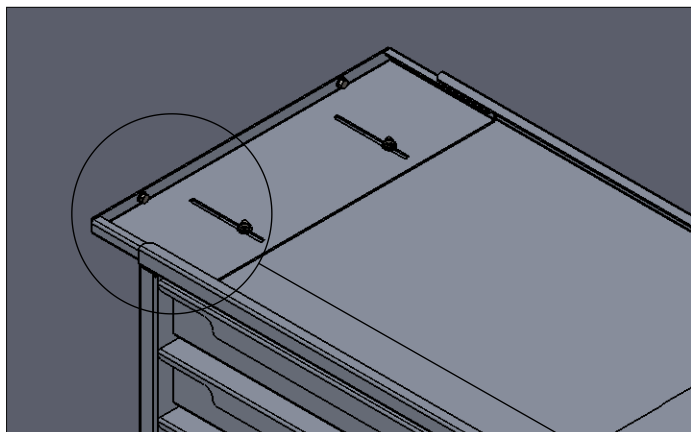
12/12/17

**PROPRIETARY AND CONFIDENTIAL**

THE INFORMATION CONTAINED IN THIS DRAWING IS THE SOLE PROPERTY OF EZSTAK LLC. ANY REPRODUCTION IN PART OR AS A WHOLE WITHOUT THE WRITTEN PERMISSION OF EZSTAK LLC IS PROHIBITED.

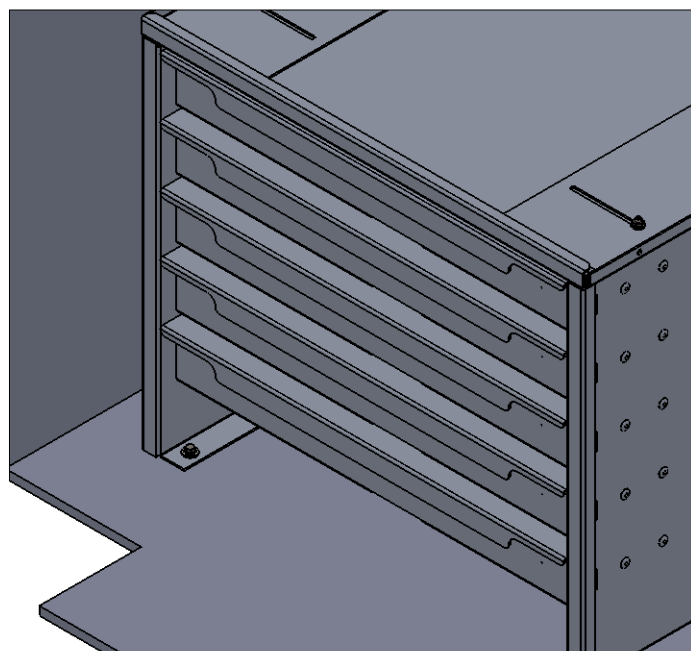
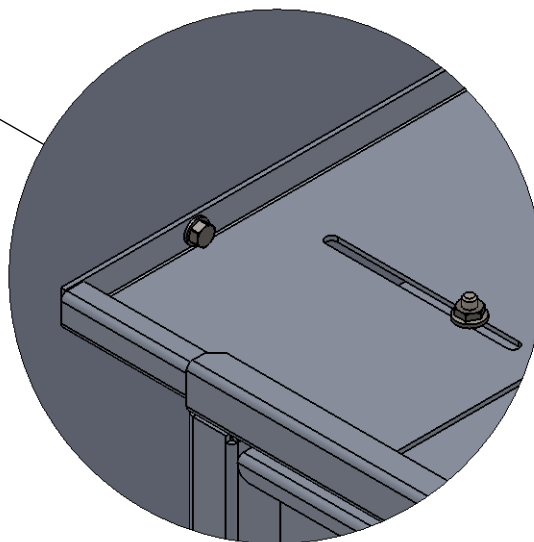
SHEET 2 OF 3

**STEP 1:**  
**REMOVE DRAWERS USING TABS ON SLIDES****STEP 2:**  
**ALIGN UNIT IN POSITION AND USE ¼" SELF-TAPPING SCREWS AND WASHERS TO FASTEN CABINET TO THE FLOOR THROUGH THE HOLES IN THE BOTTOM FLANGE OF THE SIDE PANELS.****ENSURE SCREWS WILL NOT DAMAGE FUEL TANKS, FUEL LINES, BRAKE LINES, WIRING, ETC.**



**STEP 4:**  
EXTEND THE ADJUSTABLE TOP PANELS BY LOOSENING THE BOLTS IN THE SLOTS AND USE 1/4" SELF-TAPPING SCREWS TO FASTEN THEM TO THE WALL USING THE MOUNTING HOLES IN THE PANELS. RETIGHTEN THE BOLTS TO SECURE THE PANELS.

ENSURE SCREWS WILL NOT DAMAGE FUEL TANKS, FUEL LINES, BRAKE LINES, WIRING, ETC.



**STEP 5:**  
REINSTALL THE DRAWERS