



USER GUIDE

TRUCK BOX SERIES



PREFACE

EZ STAK's Truck Box Unit will keep your pickup truck bed's space open and supplies organized. This product can be used inside cargo vans. Coming with three different sizes to suit your specific need. Sturdy design allows you to place objects inside and top of the cabinet as well as which is equipped with anti-skid strips.

Corrections or recommendations for improvement of this manual should be addressed to:

EZ STAK INC.
20400 Old Rome State Road
Watertown, NY 13601
P: 315.595.3300
E: info@ezstak.com

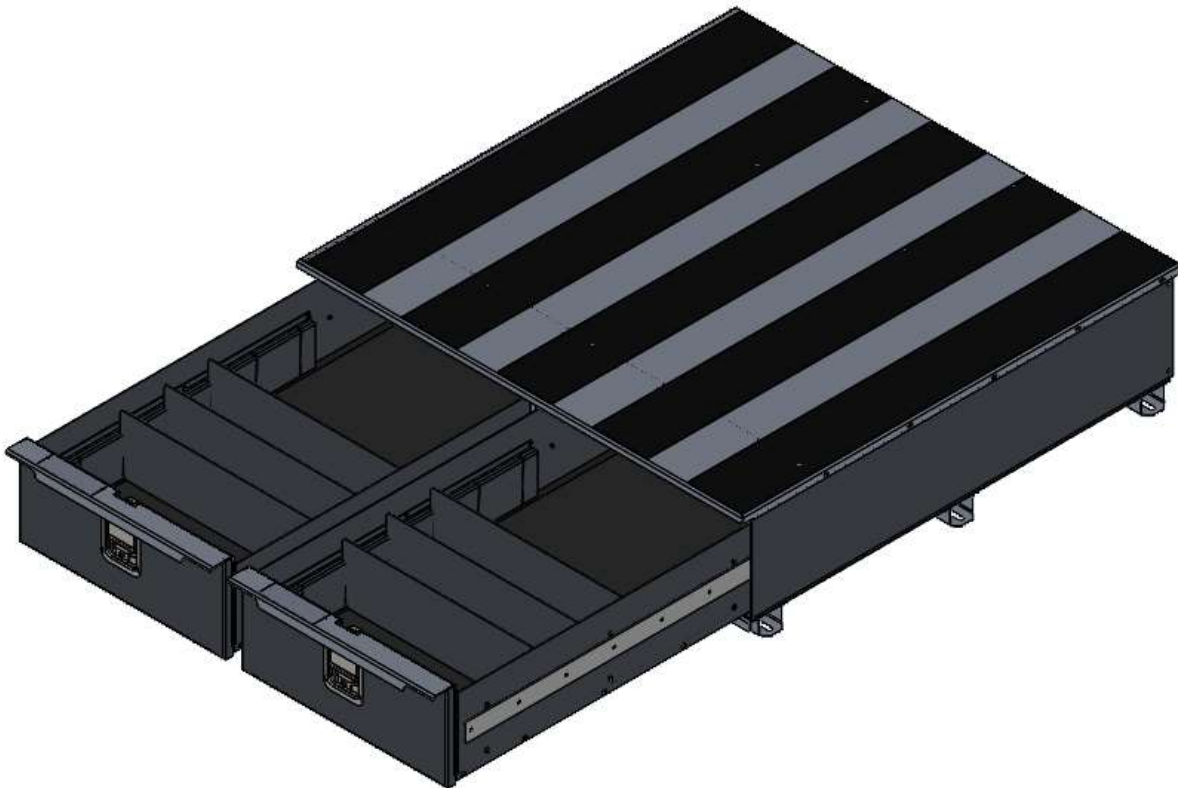


Table of Contents

Before you get started	1
General Information, Caution and Warnings:	1
Tools, PPE, and Fasteners required:	1
Inside the box:.....	2
Know your product	3
Truck Box Unit features:	3
Installation Instructions	7
Operation Instructions	9
Maintenance Instructions	9
Warranty	10
Warranty Guidelines:	10
Disclaimer:.....	11

Before you get started

General Information, Caution and Warnings:

- To reduce the risk of injury, read and heed all warnings and instructions.
- Always use safety precautions, maintain a clean, well-organized workspace.
- Use personal protective equipment while unpacking, installing, operating & maintaining the product.
- If you are unsure at any point during your interaction with the product, contact EZ STAK INC. customer care at the contact details provided in this document.

Product Specifications:

	TBU-13-48-48-200	TBU-13-40-48-200	TBU-13-48-48-100	TBU-13-40-48-100	TBU-13-30-48-100	TBU-13-20-48-100
Dimensions	13"H x 48.7"W x 48" D	13"H x 40"W x 48" D	13"H x 48.7"W x 48" D	13"H x 40"W x 48" D	13"H x 30"W x 48" D	13"H x 20"W x 48" D
Weight	250 lbs	200 lbs	250 lbs	200 lbs	165 lbs	130 lbs
Volume Capacity (cubic inches)	6,165.00	4,884.00	6,679.00	5,394.00	3,914.00	2,444.00
Drawer Load Capacity	225 lbs (each drawer)	225 lbs (each drawer)	225 lbs (each drawer)	225 lbs (each drawer)	225 lbs	225 lbs
Cabinet Top Load Capacity	750 lbs	750 lbs	750 lbs	750 lbs	750 lbs	750 lbs

Tools, PPE, and Fasteners required:

- Ratchet with Socket ½"
- Combination Wrench ½".
- Drill with ½ Drill Bit and with Drill Collar set at ½"
- Plusnut Tool / Plusnut Gun (5/16")
- Safety gloves
- Safety shoes
- 5/16" Hex head bolts (supplied with the product)
- 5/16-18 Nyloc nuts (supplied with the product)
- 5/16-18 Plus nuts (supplied with the product)
- 5/16" ID Flat washers (supplied with the product)
- 5/16" ID Fender washers (supplied with the product)
- 5/16" Round aluminum spacers, 5/16" L (supplied with the product)

Note: PPE mentioned above are the minimum requirement, customers are advised to use proper PPE as they believe are required for Installation, Operation and Maintenance of this product.

Inside the box:

- Truck Box Unit
- Keys for locks on both the lids.
- User Guide
- Installation Hardware:

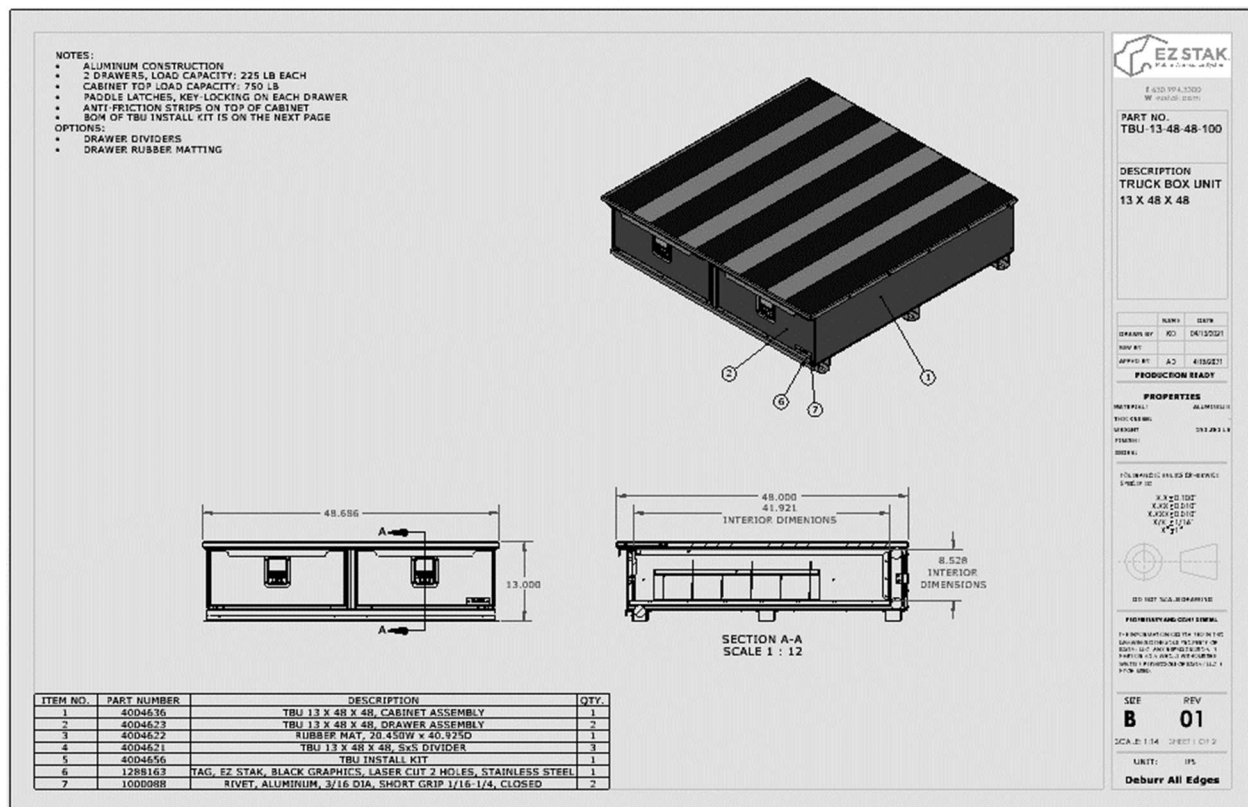
Installation Hardware:	Q'ty:
PLUS NUT-STEEL-5/16"-18 THREAD, FOR 0.020"-0.280"	6 pcs
WASHER, SPLIT LOCK, 5/16", 0.583" OD, STEEL	6 pcs
WASHER, FENDER, 5/16 X 1.5 OD, 0.062 THICK, LOW CARBON ZN FINISH STEEL	6 pcs
BOLT - Hex Head 5/16 -18 x1.75L" G5	6 pcs
WASHER - 5/16"X7/8"OD (1/16"Thickness)	18 pcs
SPACER, ROUND, UNTHREADED, 3/4" OD, 5/16" L, FOR 5/16" SCREW SIZE, ALUMINUM	6 pcs

Know your product

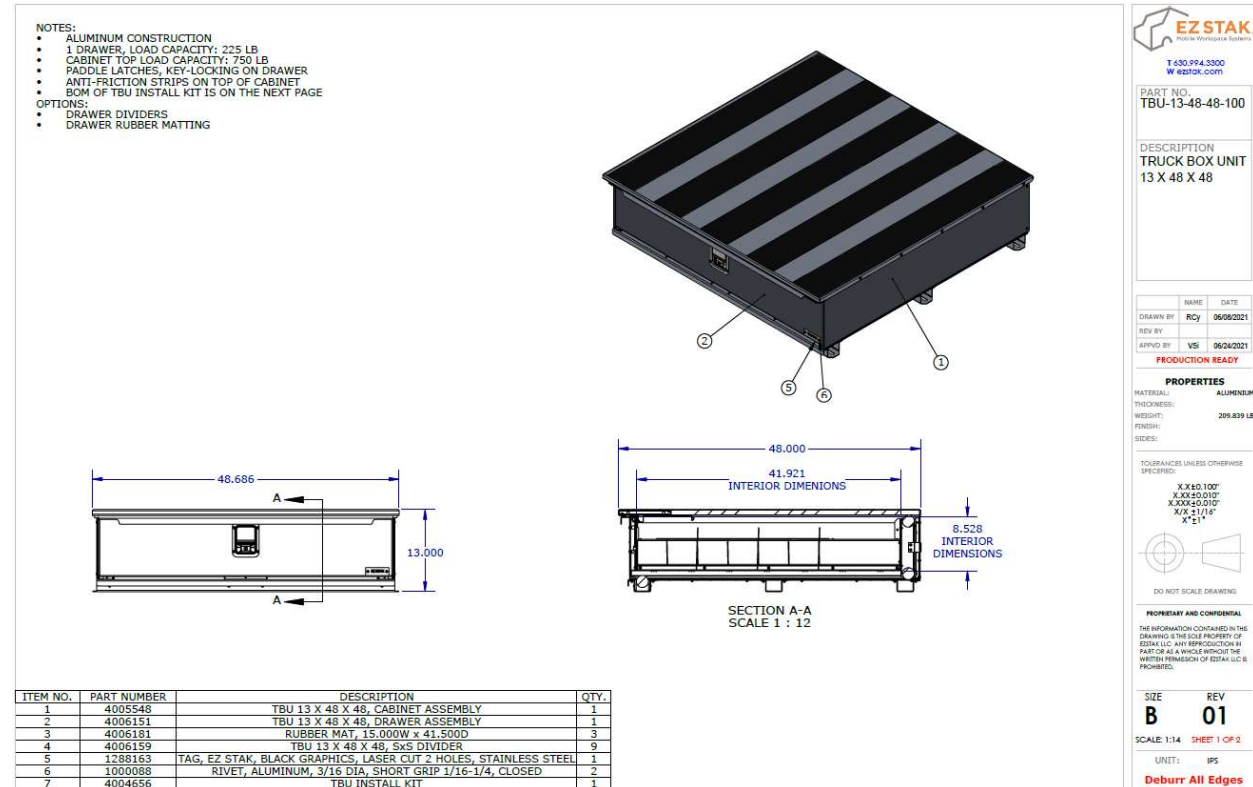
Truck Box Unit features:

- Heavy duty Truck Box Units with sturdy aluminum construction
- Light weight unit to keep the fuel efficiency higher and cargo capacity not much affected
- Water resistant design
- Universal design for various Pickup trucks
- Easy installation from top of pickup bed
- Locking drawers for safety
- Limited lifetime warranty
- Maintenance free Product

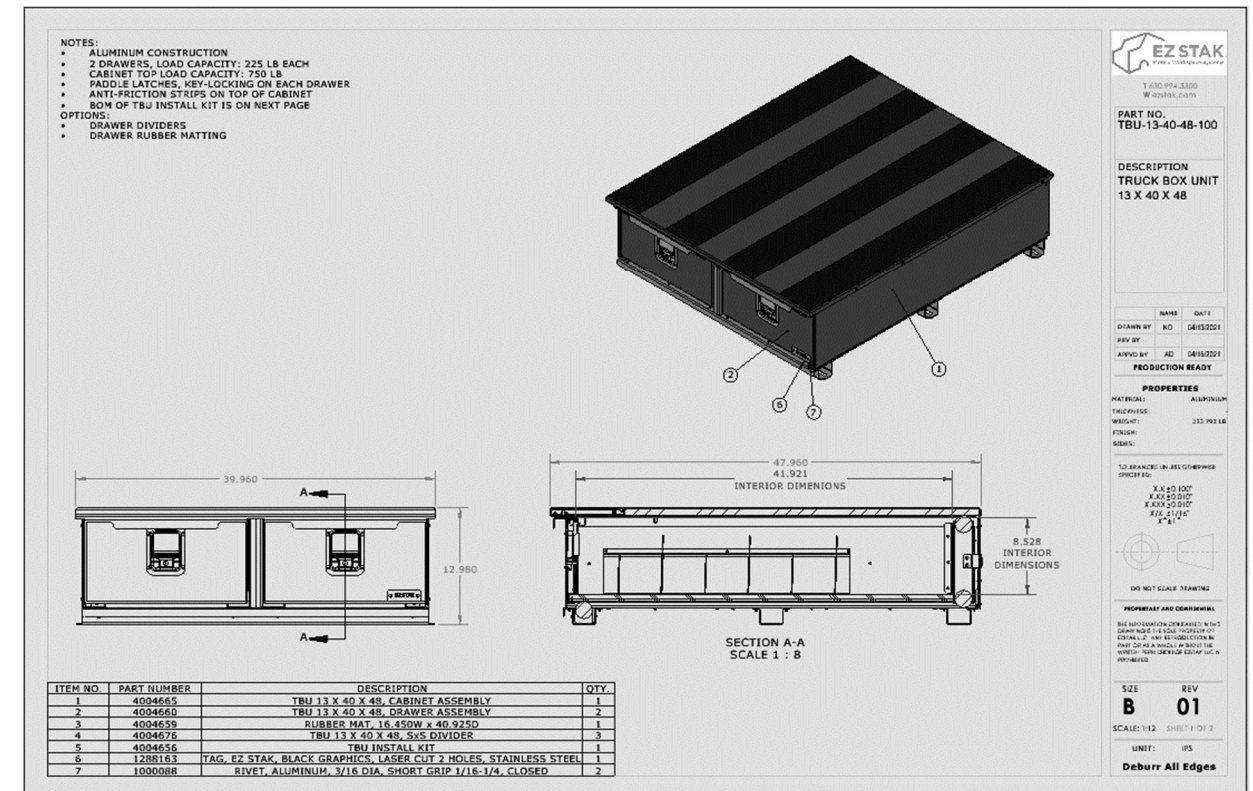
TBU-13-48-48-200



TBU-13-48-48-100:

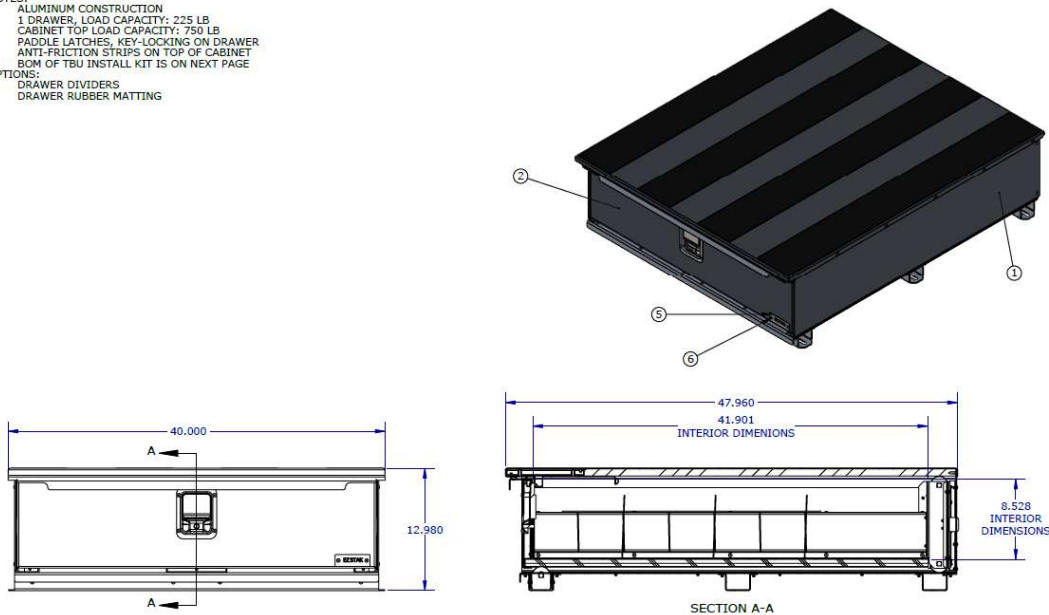


TBU-13-40-48-200:



TBU-13-40-48-100:

- NOTES:
- ALUMINUM CONSTRUCTION
 - 1 DRAWER, LOAD CAPACITY: 225 LB
 - CABINET TOP LOAD CAPACITY: 750 LB
 - PADLOCK LATCHES, KEY-LOCKING ON DRAWER
 - ANTI-FRICTION STRIPS ON TOP OF CABINET
 - BOM OF TBU INSTALL KIT IS ON NEXT PAGE
- OPTIONS:
- DRAWER DIVIDERS
 - DRAWER RUBBER MATTING



ITEM NO.	PART NUMBER	DESCRIPTION	QTY.
1	4005662	TBU 13 X 40 X 48, CABINET ASSEMBLY	1
2	4006208	TBU 13 X 40 X 48, DRAWER ASSEMBLY	1
3	4006210	RUBBER MAT, 12.150W x 41.500D	3
4	4006209	TBU 13 X 40 X 48, SxS DIVIDER	9
5	1288163	TAG, EZ STAK, BLACK GRAPHICS, LASER CUT 2 HOLES, STAINLESS STEEL	1
6	1000088	RIVET, ALUMINUM, 3/16 DIA, SHORT GRIP 1/16-1/4, CLOSED	2
7	4004656	TBU INSTALL KIT	1

EZ STAK
Mobile Workspace Systems

T 630.974.3300
W ezstak.com

PART NO.
TBU-13-40-48-100

DESCRIPTION
**TRUCK BOX UNIT
13 X 40 X 48**

NAME DATE
RCY 06/08/2021

REV BY
REV BY

APPROV BY
APPROV BY

NOT RELEASED

PROPERTIES

MATERIAL: ALUMINUM

THICKNESS: 170.873 LB

WEIGHT:

FINISH:

SIDES:

TOLERANCES UNLESS OTHERWISE SPECIFIED:

X.X ±0.100"
X.XX ±0.010"
X.XXX ±0.010"
X/X ±1/16"
X" ±1"

DO NOT SCALE DRAWINGS

PROPRIETARY AND CONFIDENTIAL

THE INFORMATION CONTAINED IN THIS DRAWING IS THE SOLE PROPERTY OF EZ STAK LLC. ANY REPRODUCTION IN PART OR AS A WHOLE WITHOUT THE WRITTEN PERMISSION OF EZ STAK LLC IS PROHIBITED.

SIZE REV
B

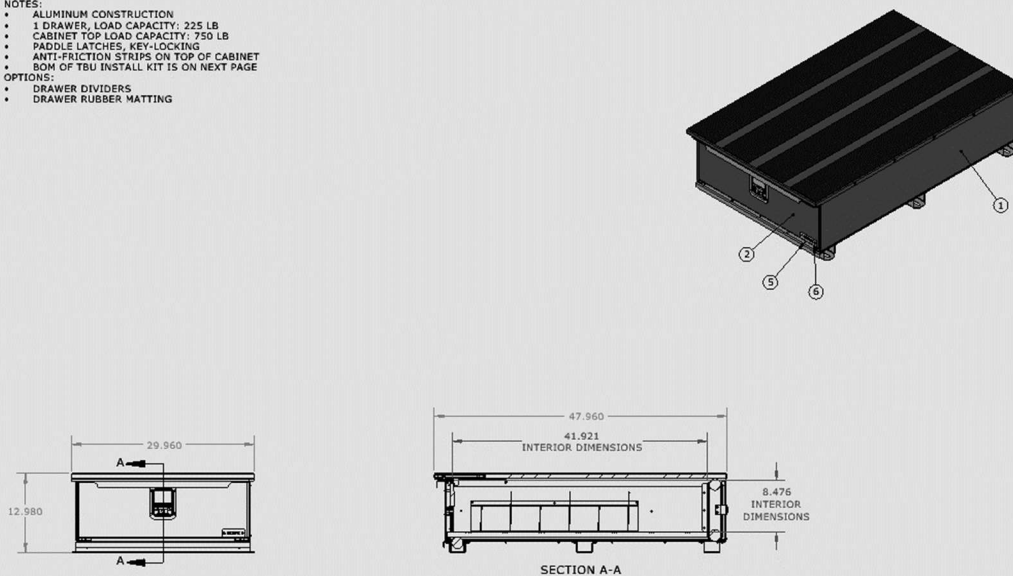
SCALE: 1:18 SHEET 1 OF 2

UNIT: IPS

Debur All Edges

TBU-13-30-48-100:

- NOTES:
- ALUMINUM CONSTRUCTION
 - 1 DRAWER, LOAD CAPACITY: 225 LB
 - CABINET TOP LOAD CAPACITY: 750 LB
 - PADLOCK LATCHES, KEY-LOCKING
 - ANTI-FRICTION STRIPS ON TOP OF CABINET
 - BOM OF TBU INSTALL KIT IS ON NEXT PAGE
- OPTIONS:
- DRAWER DIVIDERS
 - DRAWER RUBBER MATTING



ITEM NO.	PART NUMBER	DESCRIPTION	QTY.
1	4004681	TBU 13 X 30 X 48 CABINET ASSEMBLY	1
2	4004694	TBU 13 X 30 X 48 DRAWER ASSEMBLY	1
3	4004680	RUBBER MAT, 26.450W x 40.925D	1
4	4004693	TBU 13 X 30 X 48 SxS DIVIDER	3
5	1288163	TAG, EZ STAK, BLACK GRAPHICS, LASER CUT 2 HOLES, STAINLESS STEEL	1
6	1000088	RIVET, ALUMINUM, 3/16 DIA, SHORT GRIP 1/16-1/4, CLOSED	2
7	4004656	TBU INSTALL KIT	1

EZ STAK
Mobile Workspace Systems

T 630.974.3300
W ezstak.com

PART NO.
TBU-13-30-48-100

DESCRIPTION
**TRUCK BOX UNIT
13 X 30 X 48**

NAME DATE
ND 04/15/2021

REV BY
REV BY

APPROV BY
APPROV BY

PRODUCTION READY

PROPERTIES

MATERIAL: ALUMINUM

THICKNESS: 145.018 LB

WEIGHT:

FINISH:

SIDES:

TOLERANCES UNLESS OTHERWISE SPECIFIED:

X.X ±0.100"
X.XX ±0.010"
X.XXX ±0.010"
X/X ±1/16"
X" ±1"

DO NOT SCALE DRAWINGS

PROPRIETARY AND CONFIDENTIAL

THE INFORMATION CONTAINED IN THIS DRAWING IS THE SOLE PROPERTY OF EZ STAK LLC. ANY REPRODUCTION IN PART OR AS A WHOLE WITHOUT THE WRITTEN PERMISSION OF EZ STAK LLC IS PROHIBITED.

SIZE REV
B 01

SCALE: 1:12 SHEET 1 OF 2

UNIT: IPS

Debur All Edges

Installation Instructions



1. Unpack your product to find “Inside the box” items
2. Place the truck box unit on the pickup truck bed or on the floor of a cargo van. Make sure that the product’s install feet are in contact with the vehicle floor or truck bed surface.



3. Place the cabinet into the preferred position in the vehicle. Mark the fastener’s location through the slotted holes of the product’s install feet.
4. Drill through the marked location using ½” drill bit size. Coat drilled holes with zinc-rich primer if you are installing onto an aluminum truck bed or vehicle floor. Insert the plusnuts onto the drilled hole and use a plus nut gun or a plus nut tool to fasten the plus nuts to the truck bed or vehicle floor.



5. Reposition the product so that the plus nuts align to the slotted holes on the product's install feet.
6. Insert the split washer and then the flat washer on the bolt. Insert the bolt sub-assembly through the slotted holes in the install feet and through the plus nut. Using a ratchet or a combination wrench with 5/16" socket size, tighten the bolts. Use aluminum spacers/ extra washers to fill the gap between install feet and truck bed.

Operation Instructions

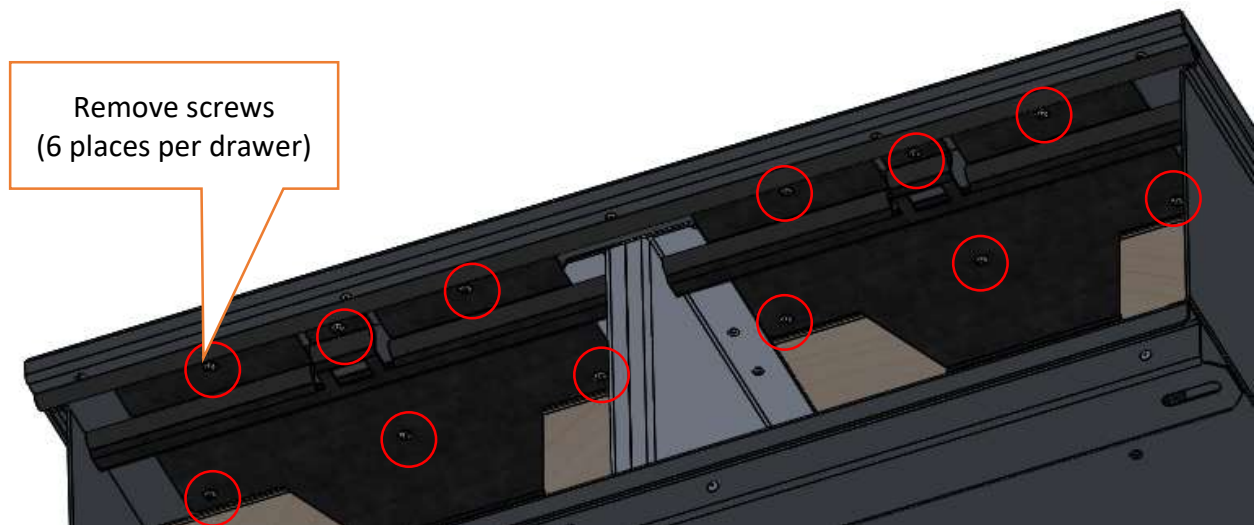
1. Use the provided keys to unlock and lock the drawers.
2. To open the drawer, pull the paddle latch to unlock and pull the handle of the drawer.
3. To close the drawer, with one hand, push the drawer completely inside the cabinet until you hear the latch engage.

Be cautious while closing the drawer, operate with just one hand by gripping the drawer handle, while keeping the other hand clear.



Maintenance Instructions

1. Your product is maintenance free, however cleaning the product regularly will maintain your great experience with the product.
2. To remove the drawers from the cabinet, unscrew the drawer stopper that is located on the underside of the top panel of the cabinet using a Philips drive screwdriver.



3. Once the drawer stopper is removed, pull the drawer out of the cabinet. A little bit of force is needed to pull the drawer out.

Warranty

Warranty Guidelines:

Limited Lifetime Warranty

Congratulations on your purchase with EZ STAK! For over 10 years, EZ STAK has been the industry leader in mobile space systems. Today we continue to maintain our excellent reputation because we only ship products that meet our strict standards for workmanship and quality. That means that we still make our products in North America and will never compromise our standards for quality. As a result, we feel fully confident in offering our customers a limited lifetime warranty on our products.

What the Warranty Covers

EZ STAK products are warrantied to the original owner against defects in manufacturing, materials and workmanship for the lifetime of the product. If a product fails due to a defect, we will provide replacement parts, repair, or replace it, at our discretion.

Period of Coverage

EZ STAK products are warrantied for the lifetime of the product under the original owner: from the purchase date until the day they are taken out of service. For as long as you own the EZ STAK product, it is covered by our warranty.

What the Warranty Does Not Cover

This warranty does not cover damage caused by accident, alteration, improper care, improper installation, negligence, misuse, abuse, corrosion, normal wear and tear of moving parts, or the natural fading of colors over extended time and use. This warranty does not cover transportation to the dealer or manufacturer to get warranty service, loss of time, loss of use, or other incidental damages. This warranty does not cover consequential damages (the cost of repairing or replacing other property which is damaged if this product does not work properly). Items not manufactured by EZ STAK, such as slides and locking mechanisms, are covered for a period of one year from the date of the original purchase.

The warranty also does not cover any damage caused directly or indirectly by such events as accidents, civil commotions, fires, floods, earthquakes, hurricanes, tornadoes, or any other natural disasters.

Please feel free to reach out to us for any query at:

EZ STAK INC.
20400 Old Rome State Road
Watertown, NY 13601
P: 315.595.3300
E: info@ezstak.com

Thank You

You can also download Soft copy of this User Guide online
@ <https://ezstak.com/install-instructions/>

Disclaimer:

The information contained in this document are based on our general experience and are believed to be correct. They are given in good faith and are intended to provide a guideline for the use of our product. Since the conditions under which our products may be used are beyond our control, this information does not imply any guarantee of final product performance/behavior and we cannot accept any liability with respect to the use of our products.