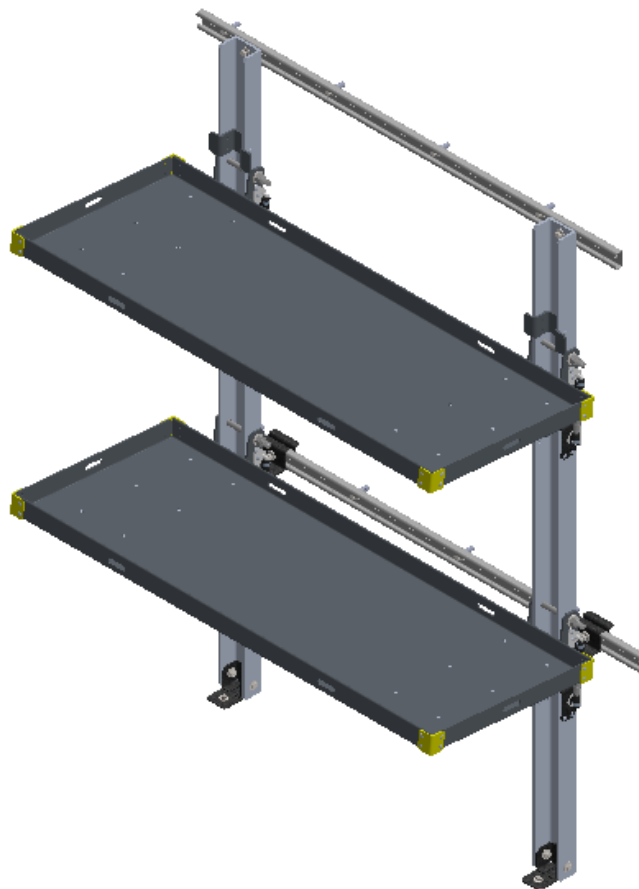




USER GUIDE

EZ Folding Shelf



PREFACE

EZ folding shelf provides maximum versatility and flexibility to our customers. The 2-level shelves fold up or down as required, making it a space saver. Gas springs ensure that the shelves remain in open or closed position as intended by the operator. Gas springs also allows the operator to fold up and down the shelves with ease. Designed to be robust and strong, it can carry up to 250 lbs. per shelf unit evenly distributed. Shelves and structure are mostly made from thick gauge aluminum to ensure the strength and durability of the product while keeping the weight on lower side. Installation is quick and easy, as it was designed to use the existing holes on the van walls to secure the product.

Corrections or recommendations for improvement of this manual should be addressed to:

EZ STAK INC.

20400 Old Rome State Road

Watertown, NY 13601

P: 315.595.3300

E: info@ezstak.com

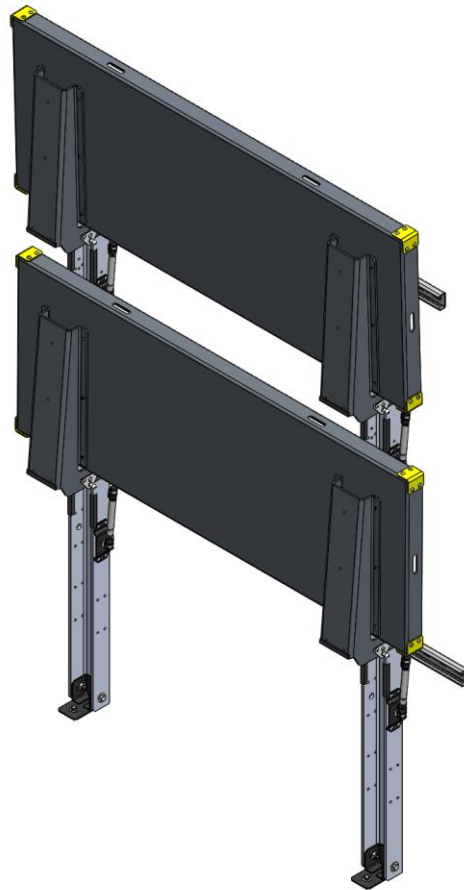


Table of Contents

Before you get started	1
General Information, Caution and Warnings:	1
Tools, PPE, and Fasteners required:	2
Inside the package:	3
Know your product	4
EZ Folding Shelf features:	4
Installation Instructions	6
Operation Instructions	16
Maintenance Instructions	16
Warranty	16
Warranty Guidelines:	16
Disclaimer:	17

Before you get started

General Information, Caution and Warnings:

- To reduce the risk of injury, read and heed all warnings and instructions.
- Always use safety precautions, maintain a clean, well-organized workspace.
- Use personal protective equipment while unpacking, installing, operating & maintaining the product.
- If you are unsure at any point during your interaction with the product, contact EZ STAK INC. customer care at the contact details provided in this document.

Product variants:

Product specifications: 18" deep shelves - High Roof			16" deep shelves - High Roof		
Part No.	Dimensions	Weight	Part No.	Dimensions	Weight
FS-HR-48-18-100	63.6" H x 48.2" W x 24.8" D	62 lb	FS-HR-48-16-100	63.6" H x 48.2" W x 22.8" D	60 lb
FS-HR-60-18-100	63.6" H x 60.2" W x 24.8" D	69 lb	FS-HR-60-16-100	63.6" H x 60.2" W x 22.8" D	66 lb
FS-HR-72-18-100	63.6" H x 72.2" W x 24.8" D	77 lb	FS-HR-72-16-100	63.6" H x 72.2" W x 22.8" D	73 lb
FS-HR-84-18-100	63.6" H x 84.2" W x 24.8" D	83 lb	FS-HR-84-16-100	63.6" H x 84.2" W x 22.8" D	79 lb
20" deep shelves - High Roof					
FS-HR-48-20-100	63.6" H x 48.2" W x 26.8" D	65 lb			
FS-HR-60-20-100	63.6" H x 60.2" W x 26.8" D	72 lb			
FS-HR-72-20-100	63.6" H x 72.2" W x 26.8" D	80 lb			
FS-HR-84-20-100	63.6" H x 84.2" W x 26.8" D	88 lb			

18" deep shelves - Medium Roof			16" deep shelves – Medium Roof		
Part No.	Dimensions	Weight	Part No.	Dimensions	Weight
FS-MR-48-18-100	63.6" H x 48.2" W x 24.8" D	62 lbs	FS-MR-48-16-100	63.6" H x 48.2" W x 22.8" D	60 lbs
FS-MR-60-18-100	63.6" H x 60.2" W x 24.8" D	69 lbs	FS-MR-60-16-100	63.6" H x 60.2" W x 22.8" D	66 lbs
FS-MR-72-16-100	63.6" H x 72.2" W x 24.8" D	77 lbs	FS-MR-72-16-100	63.6" H x 72.2" W x 22.8" D	73 lbs
FS-MR-84-18-100	63.6" H x 84.2" W x 24.8" D	83 lbs	FS-MR-84-16-100	63.6" H x 84.2" W x 22.8" D	79 lbs

Vehicle fitment chart

	Variant	Ford Transit				Ram Promaster				
		Regular 130" WB Medium Roof	Long 148" WB Medium Roof	Long 148" WB (High Roof)	Long 148" WB Extended High Roof	Short 118" WB	Medium 136" WB Low Roof	Medium 136" WB High Roof	Long 159" WB (High Roof)	Extended 159" WB (High Roof)
1	FS-HR-48-16-100	✗	✗	✓	✓	✗	✗	✓	✓	✓
2	FS-HR-48-18-100	✗	✗	✓	✓	✗	✗	✓	✓	✓
3	FS-HR-48-20-100	✗	✗	✓	✓	✗	✗	✓	✓	✓
4	FS-HR-60-16-100	✗	✗	✓	✓	✗	✗	✓	✓	✓
5	FS-HR-60-18-100	✗	✗	✓	✓	✗	✗	✓	✓	✓
6	FS-HR-60-20-100	✗	✗	✓	✓	✗	✗	✓	✓	✓
7	FS-HR-72-16-100	✗	✗	✓	✓	✗	✗	✓	✓	✓
8	FS-HR-72-18-100	✗	✗	✓	✓	✗	✗	✓	✓	✓
9	FS-HR-72-20-100	✗	✗	✓	✓	✗	✗	✓	✓	✓
10	FS-HR-84-16-100	✗	✗	✗	✓	✗	✗	✗	✓	✓
11	FS-HR-84-18-100	✗	✗	✗	✓	✗	✗	✗	✓	✓
12	FS-HR-84-20-100	✗	✗	✗	✓	✗	✗	✗	✓	✓
13	FS-MR-48-16-100	✓	✓	✓	✓	✗	✓	✓	✓	✓
14	FS-MR-48-18-100	✓	✓	✓	✓	✗	✓	✓	✓	✓
15	FS-MR-60-16-100	✓	✓	✓	✓	✓	✓	✓	✓	✓
16	FS-MR-60-18-100	✓	✓	✓	✓	✓	✓	✓	✓	✓
17	FS-MR-72-16-100	✓	✓	✓	✓	✓	✓	✓	✓	✓
18	FS-MR-72-18-100	✓	✓	✓	✓	✓	✓	✓	✓	✓
19	FS-MR-84-16-100	✗	✗	✗	✓	✗	✗	✗	✓	✓
20	FS-MR-84-18-100	✗	✗	✗	✓	✗	✗	✗	✓	✓

Tools, PPE, and Fasteners required:

- Cordless Impact Wrench
- Marker
- ½ Drill Bit with Drill Collar set at ½"
- ½" socket

- Plusnut Tool / Plusnut Gun (5/16")
- Safety gloves
- Safety shoes
- Install fasteners (Supplied with the product)

Note: PPE mentioned above are the minimum requirement, customers are advised to use proper PPE as they believe are required for Installation, Operation and Maintenance of this product.

Inside the package:

- EZ Folding Shelf parts and installation fasteners as below (each set):

ITEM NO.	DESCRIPTION	QTY.
1	SHELF ASSEMBLY (DIMENSIONS AS ORDERED)	2
2	C-CHANNEL ASSEMBLY	2
3	STRUT CHANNEL, WHITE POWDER-COATED STEEL 13/16" x 1-5/8" x 0.08"THICK, SLOTTED	2
4	GAS SPRING, 7.5" EXTENDED, 5.5" COMPRESSED, 60LBS, METAL ENDS W/ SPRING ASSIST	4
5	SUPPORT SHELF FASTENER ASSEMBLY	4
6	PLUSNUT FASTENER ASSEMBLY	10
7	STRUT CHANNEL FASTENER ASSEMBLY	2
8	MIDDLE BRACKET KIT	2

- User Guide

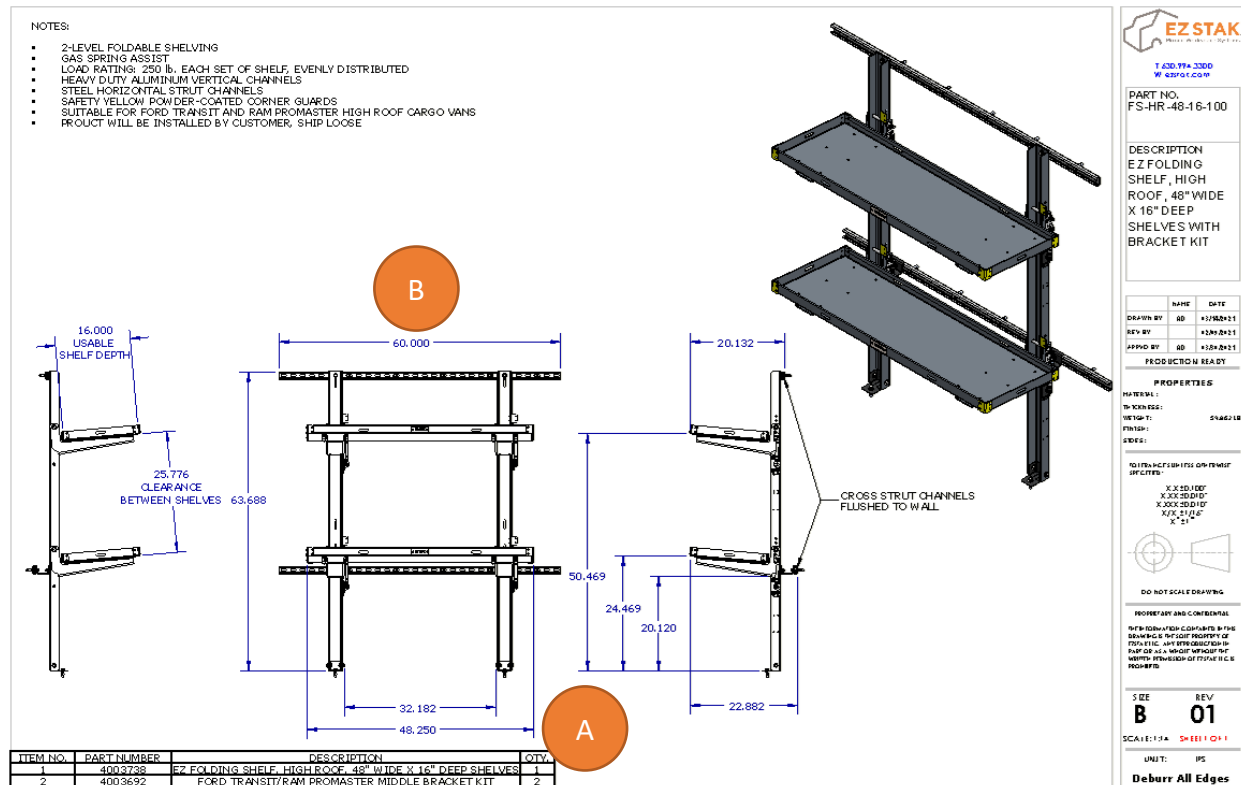
Know your Product

EZ Folding Shelf features:

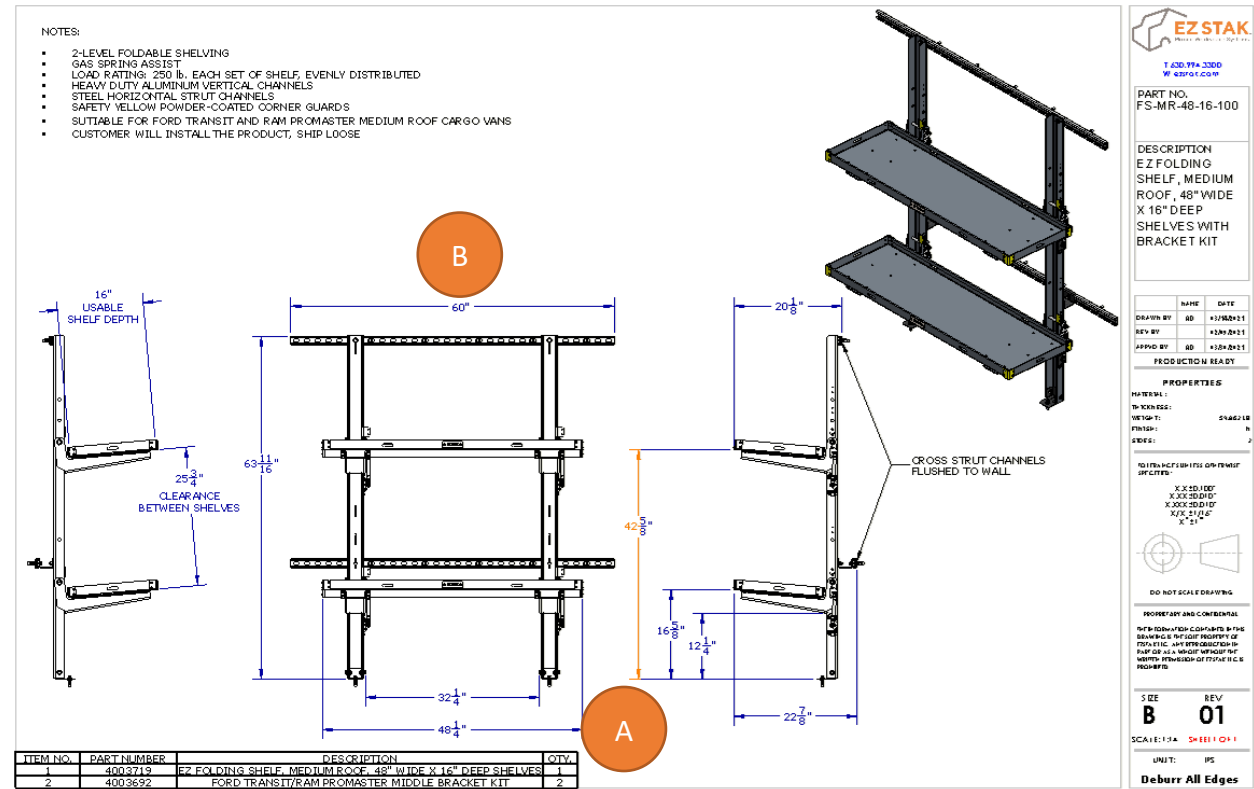
- Two levels of shelves, foldable to optimize cargo space.
- Gas springs are utilized to remove rattle and to make sure shelves remain in its intended position: open or closed position.
- Load rating 250 lbs per shelf unit, evenly distributed.
- Ease of install into cargo vans, as existing holes on vehicle holes are utilized.
- Designed to be installed with ease to Ford Transit and Ram ProMaster cargo vans.
- Limited lifetime warranty.
- Maintenance free Product.

Two sample drawings are shown below (Dimensions are for reference)

High Roof Variant:



Medium Roof Variant:



Dimension	4' wide shelves	5' wide shelves	6' wide shelves	7' wide shelves
A	48.25"	60.25"	72.25"	84.25"
B	60"	72"	96"	96"

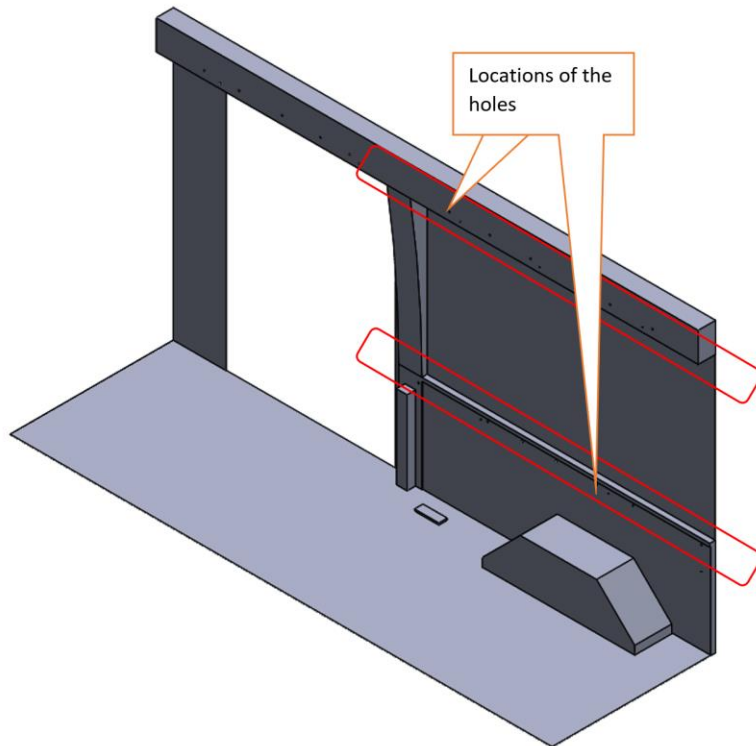
Installation Instructions

1. Unpack all components and compare with bill of materials.

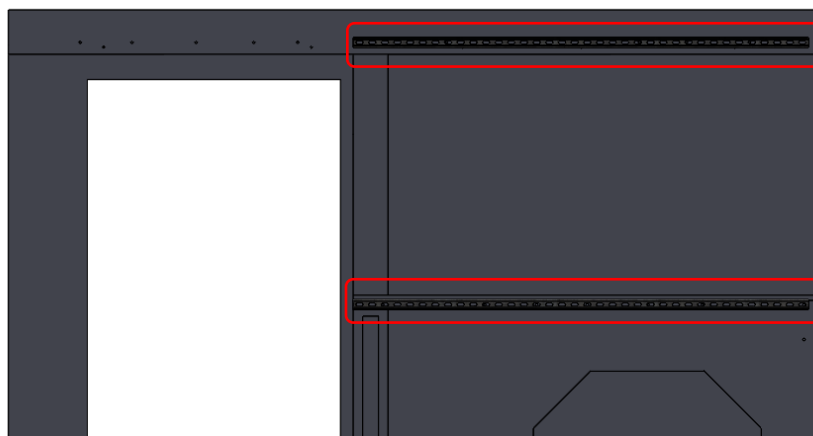
Component	Description	Qty.
	<i>SHELF ASSEMBLY, 48"W X 20"D</i> <i>SHELF ASSEMBLY, 60"W X 20"D</i> <i>SHELF ASSEMBLY, 72"W X 20"D</i> <i>SHELF ASSEMBLY, 84"W X 20"D</i> <i>SHELF ASSEMBLY, 48"W X 18"D</i> <i>SHELF ASSEMBLY, 60"W X 18"D</i> <i>SHELF ASSEMBLY, 72"W X 18"D</i> <i>SHELF ASSEMBLY, 84"W X 18"D</i> <i>SHELF ASSEMBLY, 48"W X 16"D</i> <i>SHELF ASSEMBLY, 60"W X 16"D</i> <i>SHELF ASSEMBLY, 72"W X 16"D</i> <i>SHELF ASSEMBLY, 84"W X 16"D</i>	2
	<i>C-CHANNEL ASSEMBLY (FOR HIGH ROOF)</i> <i>C-CHANNEL ASSEMBLY (FOR MEDIUM ROOF)</i>	2
	STRUT CHANNEL, 5 FEET	2
	GAS SPRING	4
	SUPPORT SHELF FASTENER ASSY	4
	PLUSNUT FASTENER ASSEMBLY	10
	STRUT CHANNEL FASTENER ASSEMBLY	2
	FORD TRANSIT/RAM PROMASTER MIDDLE BRACKET KIT	2

COMPONENTS MIGHT VARY BASED ON SELECTED PRODUCT.

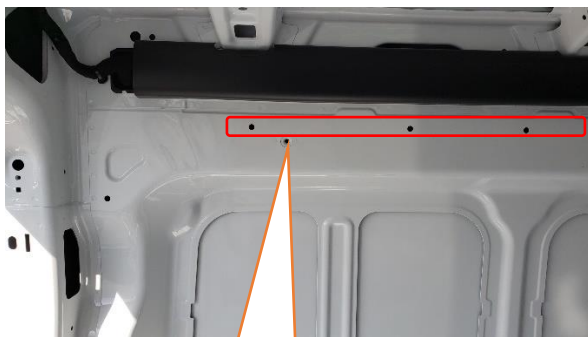
2. Locate the vehicle's existing holes (un-threaded) on the wall where the strut channels will be fastened. Help locating holes with respect to vehicle is available on following pages.



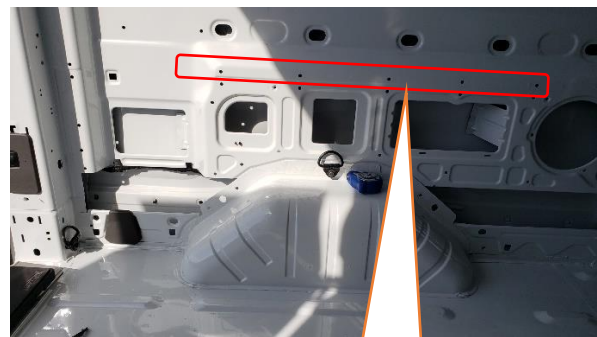
Use the strut channels as a template to mark the vehicle holes that will align to the slotted holes of the strut channels. Make sure to align a minimum of five holes for each strut channel. We highly recommend one plusnut approximately in the middle of the strut channel and two plusnuts on both sides of each C-channel, for a total of five plusnuts. Drill additional holes in vehicle wall only if necessary.



Plusnut hole location for Ford Transit (holes are existing both on left and right sides):



UPPER HOLES
FOR PLUS NUTS



LOWER HOLES
FOR PLUS NUTS

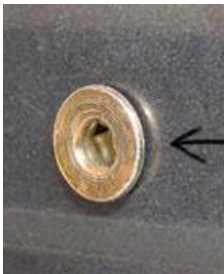
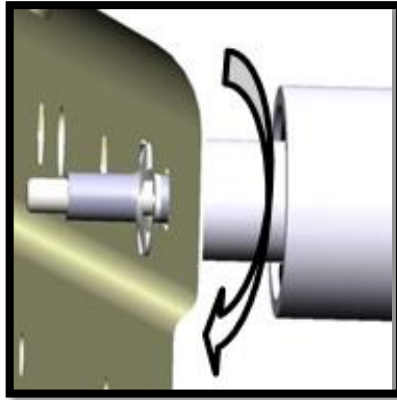
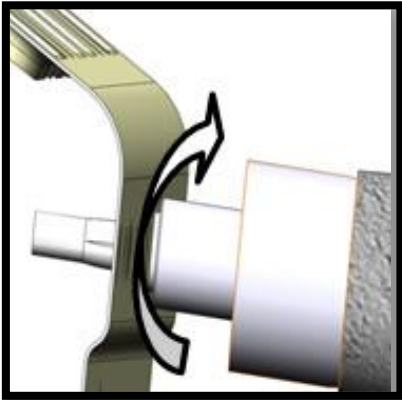
Plusnut hole location for Ram ProMaster (holes are existing both on left and right sides):



UPPER HOLES FOR
PLUS NUTS

LOWER HOLES FOR
PLUS NUTS

3. Insert the plus nuts on the marked holes and use plus nut gun to fix the plus nuts to the vehicle walls. Enlarge the holes with the $\frac{1}{2}$ " drill bit to fit the plus nut when necessary. Put the plusnut on the plusnut gun, then attach the plus nut in the hole by turning the gun forward until the plusnut locks, then remove the gun by turning in reverse.

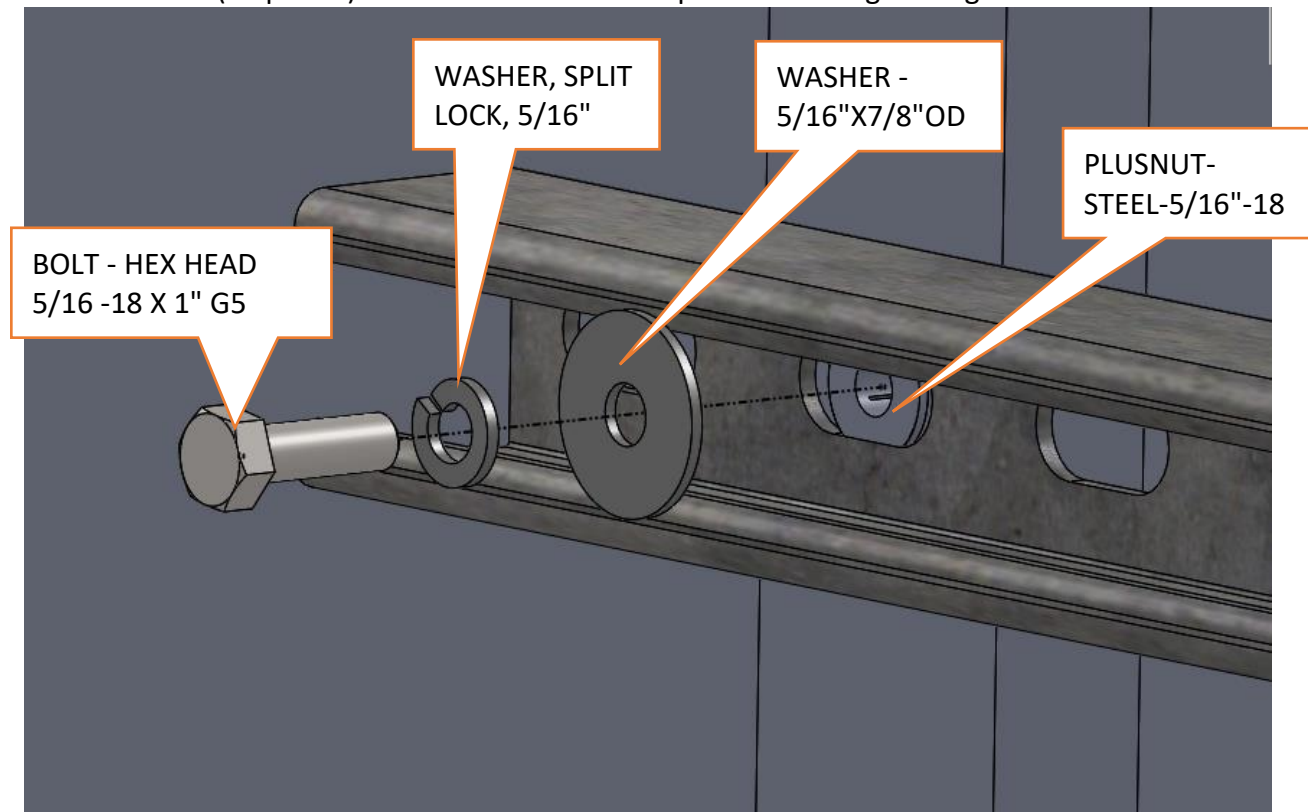


What you see after installing plusnuts.

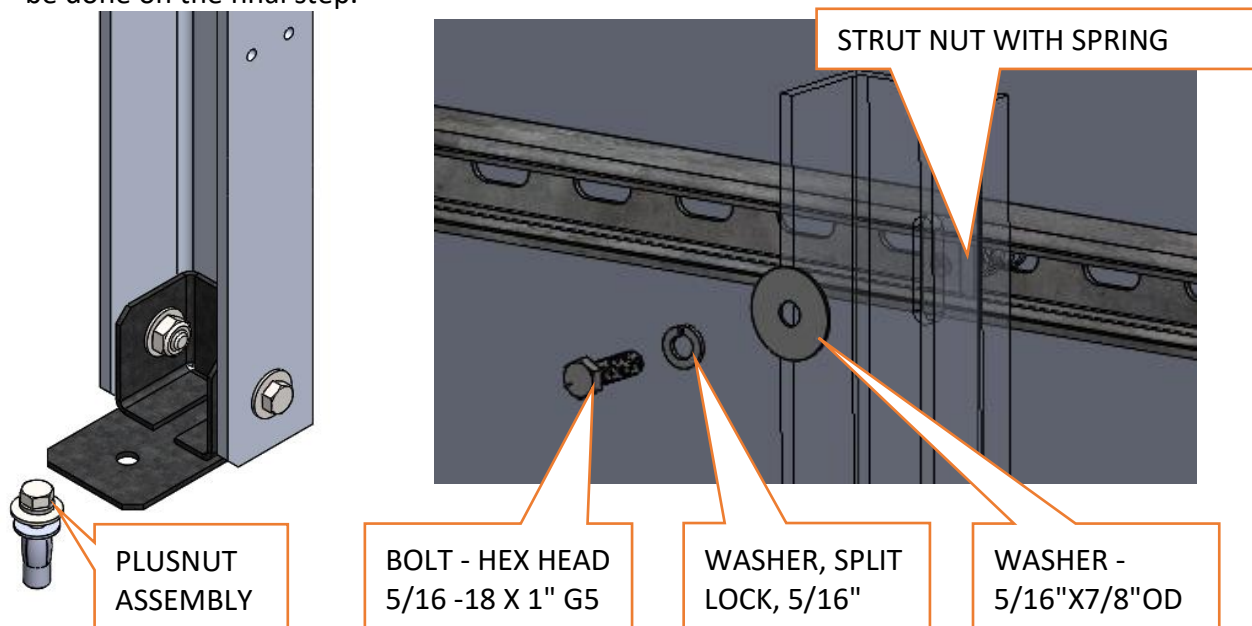


This is how it will fasten on the back.

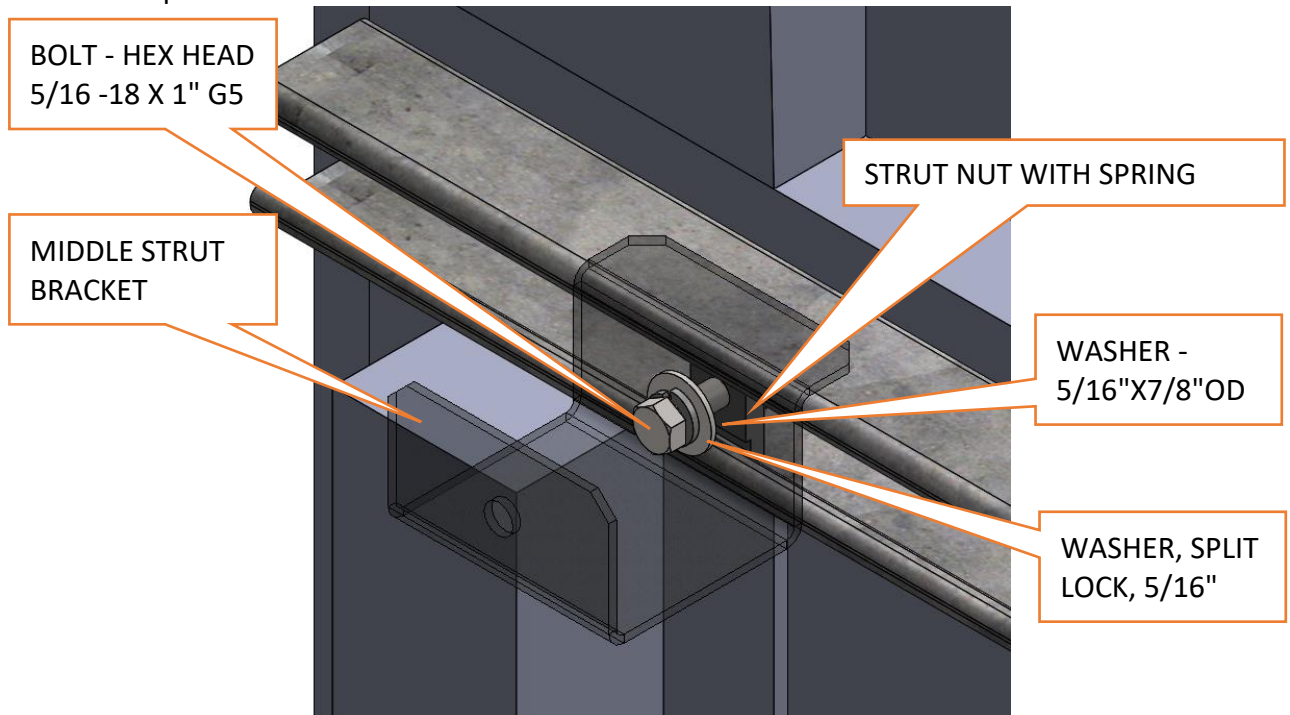
4. Install the 2 Strut Channels on the plus nuts using the provided PLUS NUT FASTENER ASSEMBLY (10 places). Put all the fasteners in place before tightening.



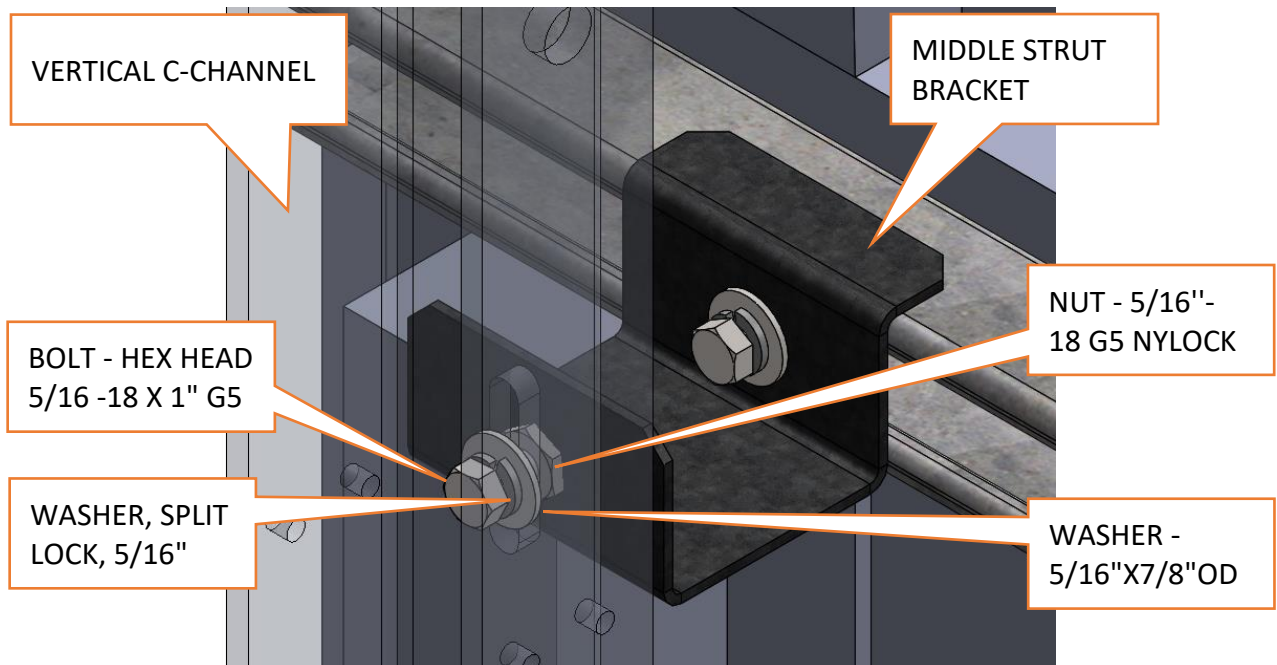
5. Temporarily remove the plusnut fastener sub-assembly from the install feet and set it aside. Install C-CHANNEL ASSEMBLY on the top strut channel by using the provided STRUT CHANNEL FASTENER ASSEMBLY (2 places). Hand tighten the fasteners, final tightening will be done on the final step.



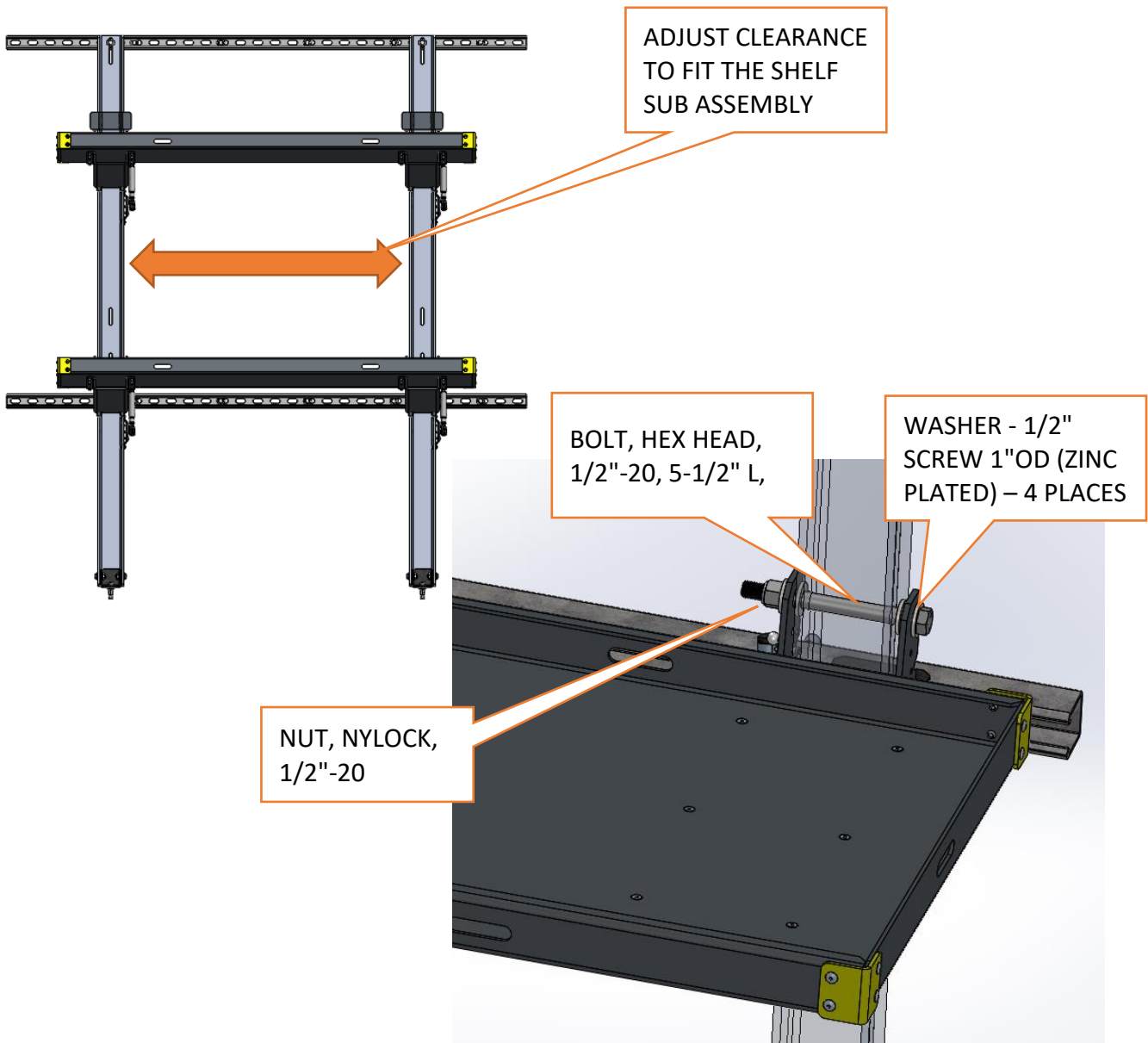
6. Install the middle bracket to the bottom strut channel using the provided STRUT CHANNEL FASTENER ASSEMBLY (2 places). Hand tighten the fasteners, final tightening will be done on the final step.



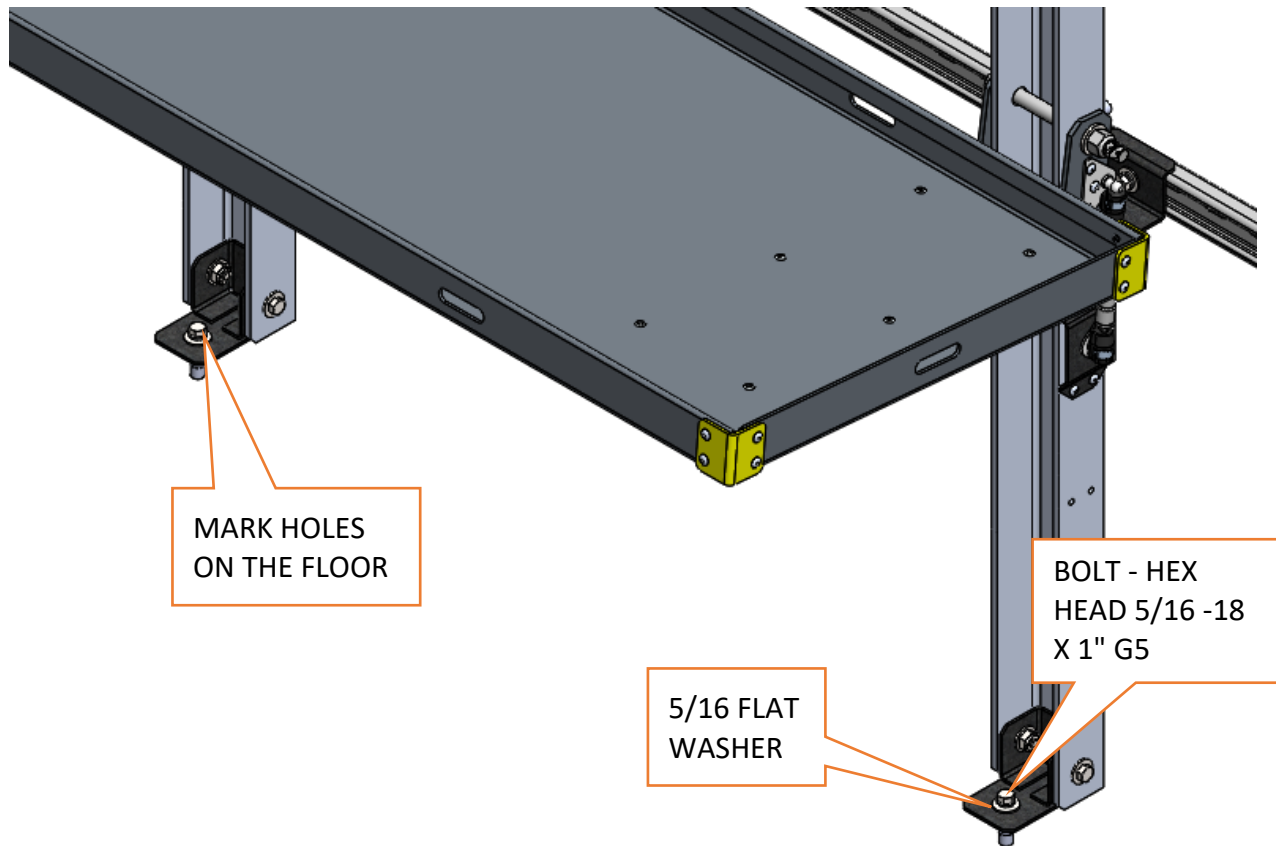
7. Fasten the vertical C-channel to the middle strut bracket using the MIDDLE BRACKET FASTENER ASSEMBLY provided (2 places). Hand tighten the fasteners, final tightening will be done on the final step.



8. Adjust the position of the 2 Vertical C-channels so that the shelf assembly will fit. Fasten the SHELF ASSEMBLY to the vertical C-Channels using the provided SUPPORT SHELF FASTENER ASSY (4 places).



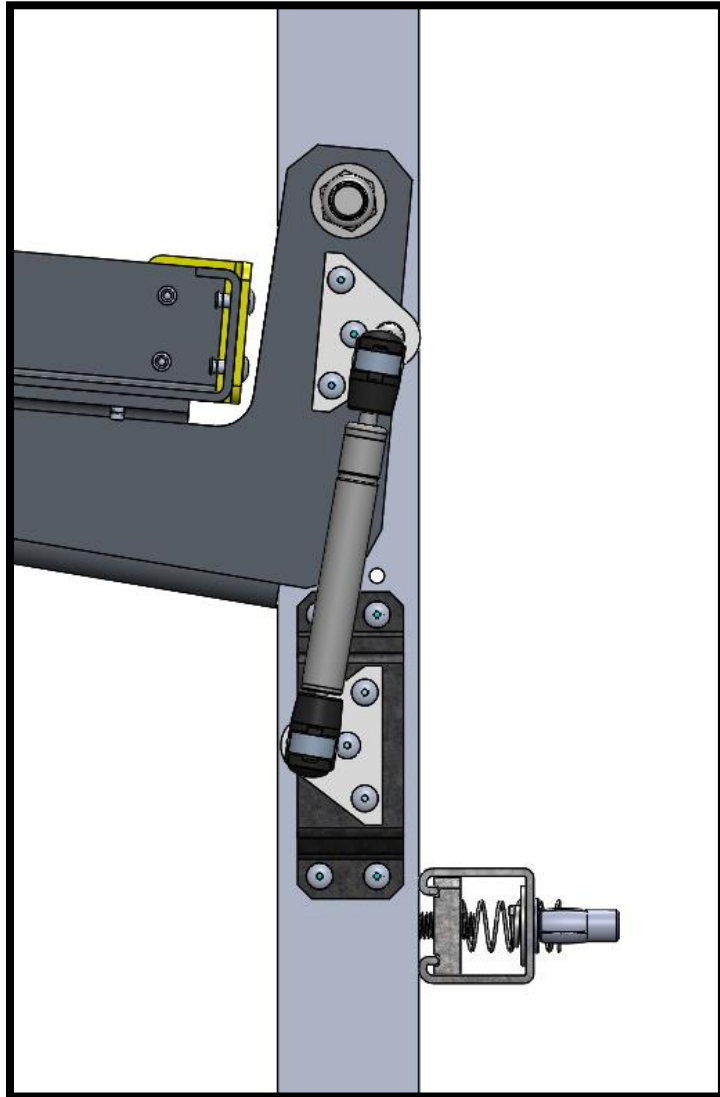
9. As the position of the 2 Vertical C-Channels is decided, mark the location on the floor where the fastener will be installed. Drill the hole on the floor using 1/2" drill bit. Put the plusnut on the plusnut gun, then attach the plus nut in the hole by turning the gun forward until the plusnut locks, then remove the gun by turning in reverse. Fasten the C-CHANNEL ASSEMBLY on the floor.



10. Tighten all the fasteners to fix the product.

11. Assemble the gas springs onto the ball studs on the vertical C-Channel and shelf support bracket. (4 places).

Install the gas spring, the rod side pointing downward, by inserting the ball studs on the sockets on the gas springs.



Tips for installing the gas spring:

- Pop-in the gas spring socket (cylinder side) on the bottom gas spring ball stud mount.
- Hold the shelf assembly on the “UP” position.
- Align the gas spring socket(rod side) to the ball stud.
- Using a rubber/wooden mallet, gently hit the gas spring socket to the ball stud (force direction should be from bottom going to the center of the ball stud) until the gas spring socket pops in ball stud.

Operation Instructions

Operation of folding shelves is very simple and with just two positions, pull it down to use it and fold it up when not in use to create space. While pulling it down or folding up, make sure that the shelves are clear of human or any objects in the way.

Maintenance Instructions

Your product is maintenance free, however cleaning the product regularly will maintain your great experience with the product.

In a remote possibility, if you find your shelves are rattling or seem to be loose, check for fasteners and tighten them.

Warranty

Warranty Guidelines:

Limited Lifetime Warranty

Congratulations on your purchase with EZ STAK! For over 10 years, EZ STAK has been the industry leader in mobile space systems. Today we continue to maintain our excellent reputation because we only ship products that meet our strict standards for workmanship and quality. That means that we still make our products in North America and will never compromise our standards for quality. As a result, we feel fully confident in offering our customers a limited lifetime warranty on our products.

What the Warranty Covers

EZ STAK products are warrantied to the original owner against defects in manufacturing, materials and workmanship for the lifetime of the product. If a product fails due to a defect, we will provide replacement parts, repair, or replace it, at our discretion.

Period of Coverage

EZ STAK products are warrantied for the lifetime of the product under the original owner: from the purchase date until the day they are taken out of service. For as long as you own the EZ STAK product, it is covered by our warranty.

What the Warranty Does Not Cover

This warranty does not cover damage caused by accident, alteration, improper care, improper installation, negligence, misuse, abuse, corrosion, normal wear and tear of moving parts, or the natural fading of colors over extended time and use. This warranty does not cover transportation to the dealer or manufacturer to get warranty service, loss of time, loss of use, or other incidental damages. This warranty does not cover consequential damages (the cost of repairing or replacing other property which is damaged if this product does not work properly). Items not manufactured by EZ STAK, such as slides and locking mechanisms, are covered for a period of one year from the date of the original purchase.

The warranty also does not cover any damage caused directly or indirectly by such events as accidents, civil commotions, fires, floods, earthquakes, hurricanes, tornadoes, or any other natural disasters.

Please feel free to reach out to us for any query at:

EZ STAK INC.
20400 Old Rome State Road
Watertown, NY 13601
P: 315.595.3300
E: info@ezstak.com

Thank You

You can also download Soft copy of this User Guide online
@ <https://ezstak.com/install-instructions/>

Disclaimer:

The information contained in this document are based on our general experience and are believed to be correct. They are given in good faith and are intended to provide a guideline for the use of our product. Since the conditions under which our products may be used are beyond our control, this information does not imply any guarantee of final product performance/behavior and we cannot accept any liability with respect to the use of our products.