



DEFENSE CAPABILITY BRIEF

ezstak.com | 315.595.3300

ABOUT US

EZ STAK is a trusted leader in the design and manufacturing of high-quality trailers, mobile workspaces, and storage solutions tailored to the unique demands of the defense industry. Our innovative products, including the new bio-composite trailer, combine durability, functionality, and sustainability to support mission-critical operations. With a commitment to customization and quality, we ensure our solutions meet the rigorous standards of defense applications, enabling teams to stay organized and mission-ready in any environment.

EZ STAK offers a versatile range of solutions to meet the needs of the defense industry, including trailers available in sizes ranging from 10' to 52'. In addition to our mobile workspace units, we provide premium cabinet and drawer systems designed for efficient storage and organization, as well as service body vehicles built to handle the toughest environments. Our products are fully customizable to ensure they meet the specific requirements of every mission.

OUR TEAM



Shane Lawrenson
Senior Sales Director
Major Commands & Programs
Shane.Lawrenson@ezstak.com
607-301-6710



Dennis Edwards
Senior Director
Global Business Development
Dennis.Edwards@ezstak.com
315-259-1052



Daniel Bryan
Sales Director
Army, Marines, SOCOM
Daniel.Bryan@ezstak.com
915-240-7008



Joe Lawrenson
Sales Director
Govt., Federal & State Agencies
Joe.Lawrenson@ezstak.com
607-301-6711



Ronalyn Chu
Sales Admin
Ronalyn.Chu@ezstak.com
909-906-6565

10' C2-LITE UNIT



Part #: EZ-10-UTV

TRAILER FEATURES:

- Aluminum black exterior screwless panels
- Solid wall at rear
- Passenger side door
- Heavy-Duty steel frame
- Spray foam insulation
- Red/White interior LED DOT lighting
- Adjustable shelving unit and desk workstation with monitor screen
- Whiteboard
- Can be pulled by ATV



16' AGILE COMBAT EMPLOYMENT UNIT



Part #: EZ-16-ACE

TRAILER FEATURES:

- Aluminum white exterior screwless panels
- Rear ramp door
- Passenger side door
- Heavy-Duty steel frame
- Spray foam insulation
- Red/White interior LED DOT lighting
- Desk workstations
- EZ STAK drawer units for storage with countertop
- Flammable cabinet for hazardous materials storage



16' AIRFIELD DAMAGE REPAIR UNIT



Part #: EZ-16-ADR

TRAILER FEATURES:

- Aluminum charcoal gray exterior screwless panels
- Rear ramp door
- Heavy-Duty steel frame
- Spray foam insulation
- Red/White interior LED DOT lighting



16' TACTICAL SUPPORT TEAM UNIT



Part #: EZ-16-EOD

TRAILER FEATURES:

- Aluminum white exterior screwless panels
- Rear ramp door and passenger side door
- Tongue-mounted generator c/w cabinet
- Power awning with wind sensors
- Heavy-Duty steel frame
- Spray foam insulation
- Red/White interior LED DOT lighting
- Adjustable shelving unit and tank storage unit with straps
- Auto retract awning.



16' ISR NEST UNIT



Part #: EZ-16-UAV

TRAILER FEATURES:

- Heavy-duty steel frame
- Wall posts and roof bows at 16" center
- White exterior screwless panels
- Spray foam insulation
- Rear ramp and side man door
- 7000 lb tandem torsion drop axles c/w electric brakes
- Tongue-mounted generator c/w cabinet
- Ductless mini-split air conditioner
- Red/white interior LED lighting
- Interior/exterior outlets
- Heavy-duty aluminum custom cabinets
- High Quality wood desks can hold up to 250 lbs in weight.



20' FTX UNIT



Part #: EZ-20-SMT

TRAILER FEATURES:

- Heavy-duty steel frame
- Wall posts and roof bows at 16" center
- White exterior screwless panels
- Spray foam insulation
- Rear ramp and side man door
- 7000 lb tandem torsion drop axles c/w electric brakes
- Tongue-mounted generator c/w cabinet
- Power awning with wind sensors
- Red/white interior LED lighting
- Interior/exterior outlets
- Heavy-duty aluminum custom cabinets



24' CDDAR UNIT



Part #: EZ-24-CDDAR

TRAILER FEATURES:

- Heavy-duty steel frame
- White exterior screwless panels
- Spray foam insulation
- Rear ramp and side man door
- Tongue-mounted generator c/w cabinet
- Power awning with wind sensors
- Red/white interior LED lighting
- Heavy-duty aluminum custom cabinets
- Fold-up countertops
- Spare tire included



24' C2-MEDIUM UNIT



Part #: EZ-24-FTX

TRAILER FEATURES:

- Heavy-duty steel frame
- White exterior screwless panels
- Spray foam insulation
- Rear ramp and side man door
- Tongue-mounted generator c/w cabinet
- Power awning with wind sensors
- Red/white interior LED lighting
- Fold-up countertops
- External screen with a door panel



24' FMS SUSTAINMENT UNIT



CUSTOM SOLUTIONS:

- Wraps: colors, designs, photos, and more.
- Powder Coat: Select from several colors to include yellow, red, white, blue, and black.

Part #: EZ-24-FAM

TRAILER FEATURES:

- Heavy-duty steel frame
- White exterior screwless panels
- Spray foam insulation
- Rear ramp and side man door
- Tongue-mounted generator c/w cabinet
- Power awning with wind sensors
- Red/white interior LED lighting
- Front Desk workstation



42' C2-HEAVY UNIT



Part #: EZ-42-MCP

TRAILER FEATURES:

- 8' gooseneck, 34' main body
- Heavy-duty steel frame
- White exterior screwless panels
- Spray foam insulation
- Rear ramp and side man door
- 2x Power awning with wind sensors
- Red/white interior LED lighting
- Fold-up countertops with monitor screens
- Exterior screens under awnings



48' STORM RESPONSE TEAM UNIT



Part #: EZ-48-SRT

TRAILER FEATURES:

Office Area: A quiet work station for crew members, with table space, whiteboards and overhead storage cabinets.

Kitchen Area: Shelving designed for kitchen appliances, food storage and meal preparation while on-site.

Equipment Storage: Keep equipment organized with EZ STAK drawers and adjustable shelving units.

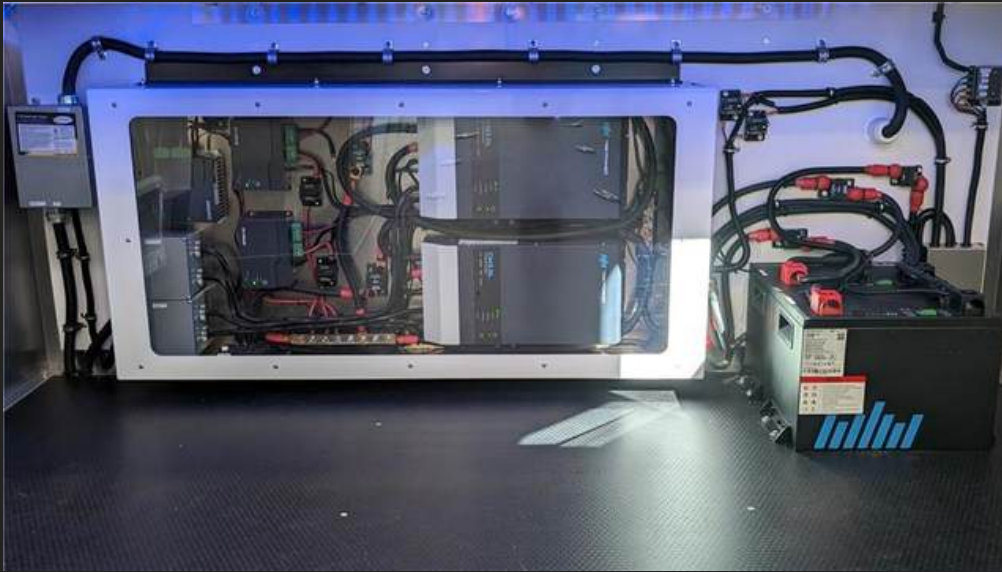
Meeting Room: A meeting space for collaboration, separated by a sliding door to allow for privacy and focus.

Exterior Accessories: Exterior of the trailer is equipped with electrically powered awnings and scene lights to aid in any storm response scenario.

We offer units ranging from store fronts, barbra shops, sensitive activities sprinter vans, and more.



EZ ENERGY SYSTEM



ADDITIONAL FEATURES:

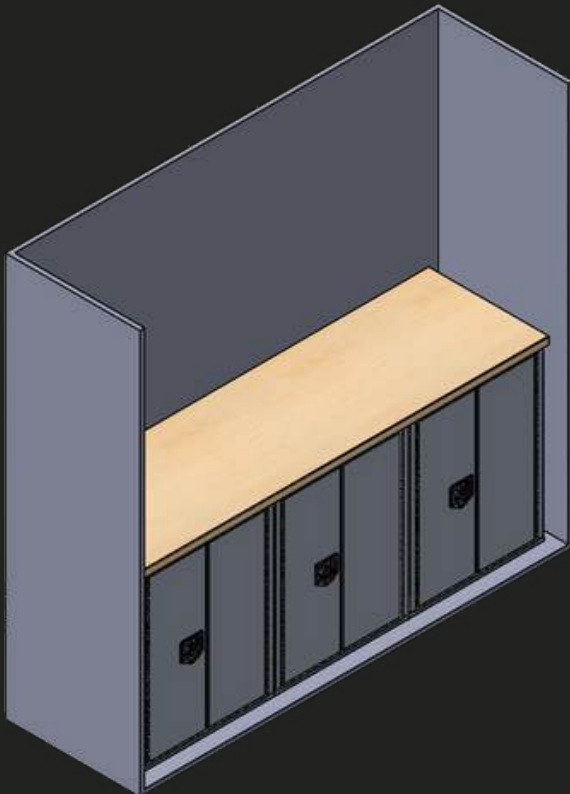
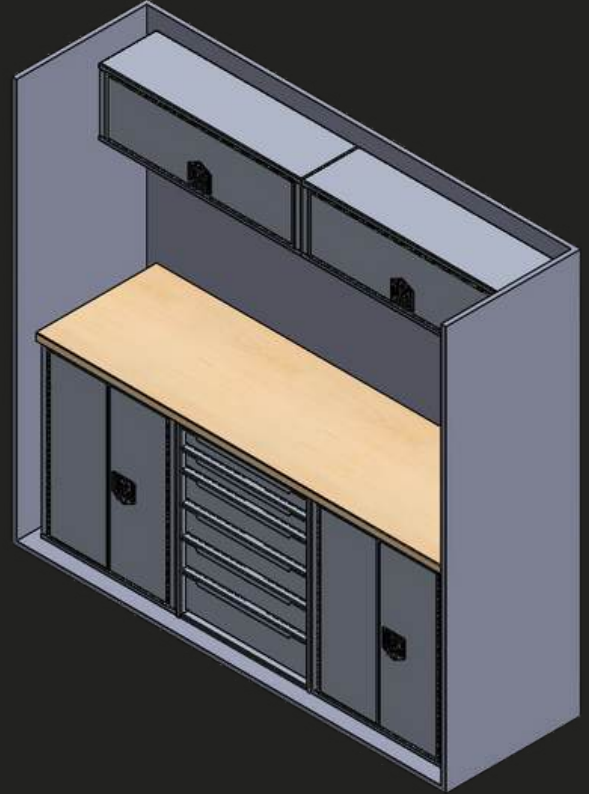
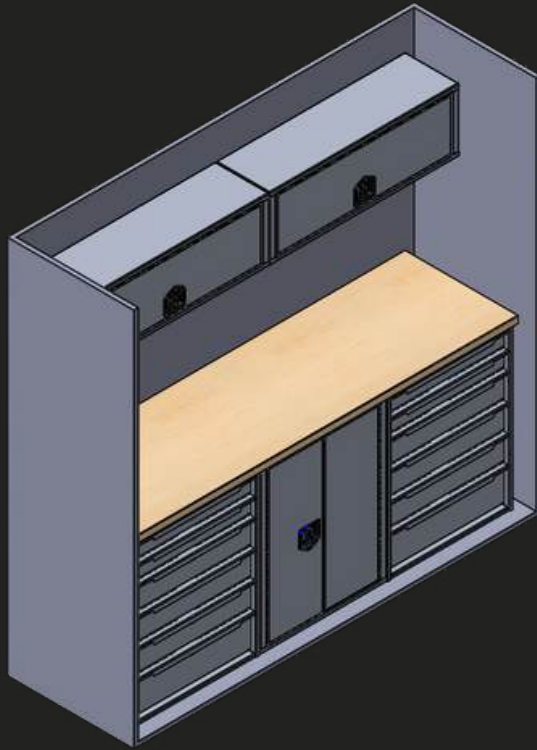
- Fully charges in just 3 hours with 50-amp shore power.
- Equipped with 400-amp-hour batteries for long-lasting performance.
- Includes a user-friendly LCD touch screen display for easy operation.
- Bluetooth-compatible controller allows remote access via your smartphone.

EZ ENERGY FEATURES:

- Powers an entire trailer, including up to three air conditioners.
- Equipped with four solar panels, each rated at 330 watts, delivering a total of 1,320 watts of solar power.
- Includes two 50-amp charge controllers for efficient energy management.
- Features two 3,000-watt hybrid inverters, providing a combined output of 6,000 watts.
- Integrated 60-amp DC-to-DC controller enables faster charging when connected to a vehicle.



CABINET KITS



CABINET FEATURES:

- **Lightweight & Durable:** Cabinets constructed with high-strength, all-aluminum materials.
- **Premium Countertop:** Thick, long-lasting hardwood maple surface.
- **Customizable Solutions:** Multiple configurations available to suit various needs and budgets.
- **Heavy-Duty Drawer Slides:** Rated for 200 lbs. to ensure reliable performance.
- **Flexible Organization:** Adjustable front-to-back drawer dividers for enhanced customization.
- **Versatile Storage:** Adjustable shelves inside closets accommodate a wide variety of items.
- **Powder Coating Options:** Available in numerous colors and combinations for a personalized finish.

MOBILE WORK BENCH

Mission ready storage and workstations for rapid deployment and seamless access.



MOBILE WORK BENCH FEATURES:

- This mobile workbench utilizes an interlock drawer system to improve safety, allowing only one drawer to open at a time.
- EZ STAK locking drawers and cabinet
- 1" maple wood countertop
- USA made Rubber wheels improve grip to reduce sliding while locked
- Built-in forklift pockets for easy transportation
- Side document tray
- Side Push/pull handle

EZ CUBE



CUBE FEATURES:

- 6 L x 8 W x 7 H
- Side panels made from recycled plastic bottles
- Cost efficient
- Light weight and can be moved with forklift
- Easily configurable to fit the mission
Can be wrapped in any color or unit logo
- HVAC capable
- Quick delivery time
- Two door options (barn doors or pull up doors)



CONTACT MAINTENANCE TRUCK



TRUCK FEATURES:

Rugged Construction: Built with durable materials to endure harsh environments and heavy use.

Extended Product Life: High-quality components minimize wear and tear, reducing replacement costs.

High Weight Capacity: Supports heavier tools and equipment, eliminating the need for extra storage.

Low Maintenance: Designed for minimal upkeep, saving time and reducing downtime.

Seamless Fit: Installs directly into vehicles without modifications

