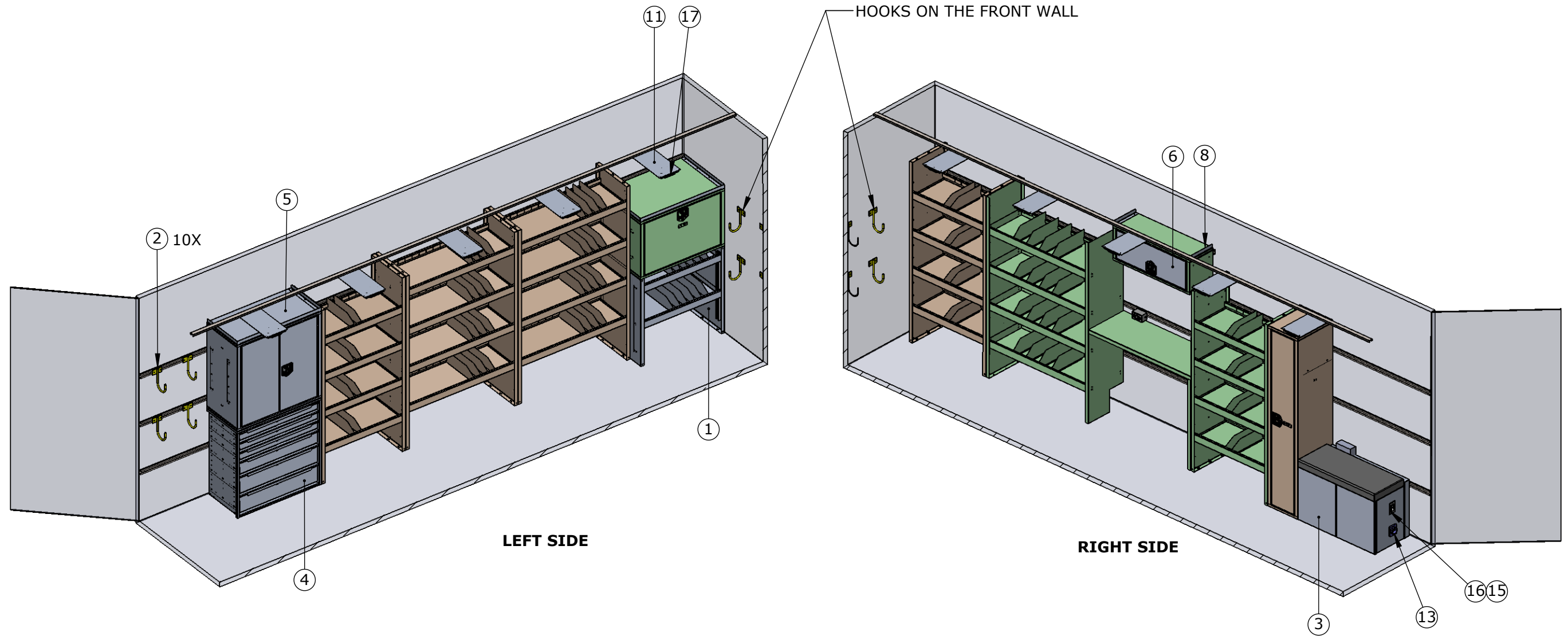


LAYOUT



T 630.994.3300
W ezstak.com

PART NO.
11150-A00

DESCRIPTION
UPFIT: 20' C-CAN

	NAME	DATE
DRAWN BY	VK	08/01/2023
REV BY		-
APPVD BY		

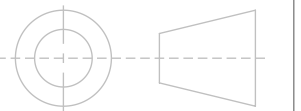
NOT RELEASED

PROPERTIES

MATERIAL:
THICKNESS:
WEIGHT: 6941.3762 LB
FINISH:
SIDES:

TOLERANCES UNLESS OTHERWISE SPECIFIED:

X.X ±0.100"
X.XX ±0.010"
X.XXX ±0.010"
X/X ±1/16"
X° ±1°



DO NOT SCALE DRAWING

PROPRIETARY AND CONFIDENTIAL

THE INFORMATION CONTAINED IN THIS DRAWING IS THE SOLE PROPERTY OF EZSTAK LLC. ANY REPRODUCTION IN PART OR AS A WHOLE WITHOUT THE WRITTEN PERMISSION OF EZSTAK LLC IS PROHIBITED.

SIZE **B** REV **C1**

SCALE: 1:64 SHEET 1 OF 5

UNIT: IPS

Deburr All Edges

ITEM NO.	PART NUMBER	DESCRIPTION	Default/QTY.	PRODUCTDETAIL
1	SU-36-36-24	SHELF UNIT, ADJUSTABLE, 36H x 36W x 24D, AL - PR	1	2 ADJUSTABLE SHELF STARTING 15" FROM FLOOR, 3" SHELF LIP, 6x DIVIDERS PER SHELF, ALUMINUM CONSTRUCTION
2	1056975	HOOK, SWIVEL, 8" L, 4" OPENING, TUMBLED ALUMINUM, PAINTED YELLOW	10	8" SWIVEL HOOK, 4" OPENING, STEEL, PAINTED YELLOW
3	BNCH-24-36-18-001	BENCH ASSEMBLY	1	
4	DU-36-36-18	DRAWER UNIT 36H x 36W x 18D	1	3-4"H, 1-6"H AND 2-8" DRAWER, 200LB DRAWER SLIDES, 6X DIVIDER PER DRAWER, ALUMINUM CONSTRUCTION
5	CL-36-36-18	CLOSET UNIT 36H x 36W x 18D - PR	1	SOLID PRIMARY/SECONDARY DOOR W/ LOCKING T-HANDLE, 2x ADJUSTABLE SHELVES AT 12" RESPECTIVELY, 3" SHELF LIP, 6x DIVIDERS PER SHELVES, ALUMINUM CONSTRUCTION
6	4008978	CH, DOOR ASSEMBLY,14H x 36W, AL - PR	1	
7	CR-36W-18D	KIT, CARGO RAIL, 1.5"H x 36W x 18D, AL - PR	1	
8	CR-36W-12D	KIT, CARGO RAIL, 1.5"H x 36W x 12D, AL - PR	1	
9	CR-36W-24D	KIT, CARGO RAIL, 1.5"H x 36W x 24D, AL - PR	1	
10	1320906	MODULE, OUTLET, 15A, 125V, 2PLUG W/ 2 USB PORTS	2	
11	1477332	FLAT PLATE	5	
12	1474712	MODULE, DUAL 6V GEL BATTERIES WITH BOX, 20A XANTRAX CHARGER	1	
13	1291602	PLUG, SHORE POWER, 15A, 125V, 80101-BCWT	1	
14	1439828	ELECTRICAL, SHORE POWER (EXTENSION) CORD, 15AMP, 125V, 25 FEET, S-16890	1	
15	1321008	SWITCH, 15A, 120V, 1P, DECORA, WHITE, 5601P2W	1	
16	1202326	PLATE, DECORATOR, 1G, STANDARD SIZE, STAINLESS STEEL,SS26	1	
17	1291603	LED LIGHT, INTERIOR, 12V, 8" ROUND, DOME LIGHT, WHITE, 80C0EHCR	5	



T 630.994.3300
W ezstak.com

PART NO.
11150-A00

DESCRIPTION
UPFIT: 20' C-CAN

	NAME	DATE
DRAWN BY	VK	08/01/2023
REV BY		-
APPVD BY		

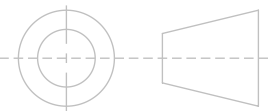
NOT RELEASED

PROPERTIES

MATERIAL:
THICKNESS:
WEIGHT: 6941.3762 LB
FINISH:
SIDES:

TOLERANCES UNLESS OTHERWISE SPECIFIED:

X.X ±0.100"
X.XX ±0.010"
X.XXX ±0.010"
X/X ±1/16"
X° ±1°



DO NOT SCALE DRAWING

PROPRIETARY AND CONFIDENTIAL

THE INFORMATION CONTAINED IN THIS DRAWING IS THE SOLE PROPERTY OF EZSTAK LLC. ANY REPRODUCTION IN PART OR AS A WHOLE WITHOUT THE WRITTEN PERMISSION OF EZSTAK LLC IS PROHIBITED.

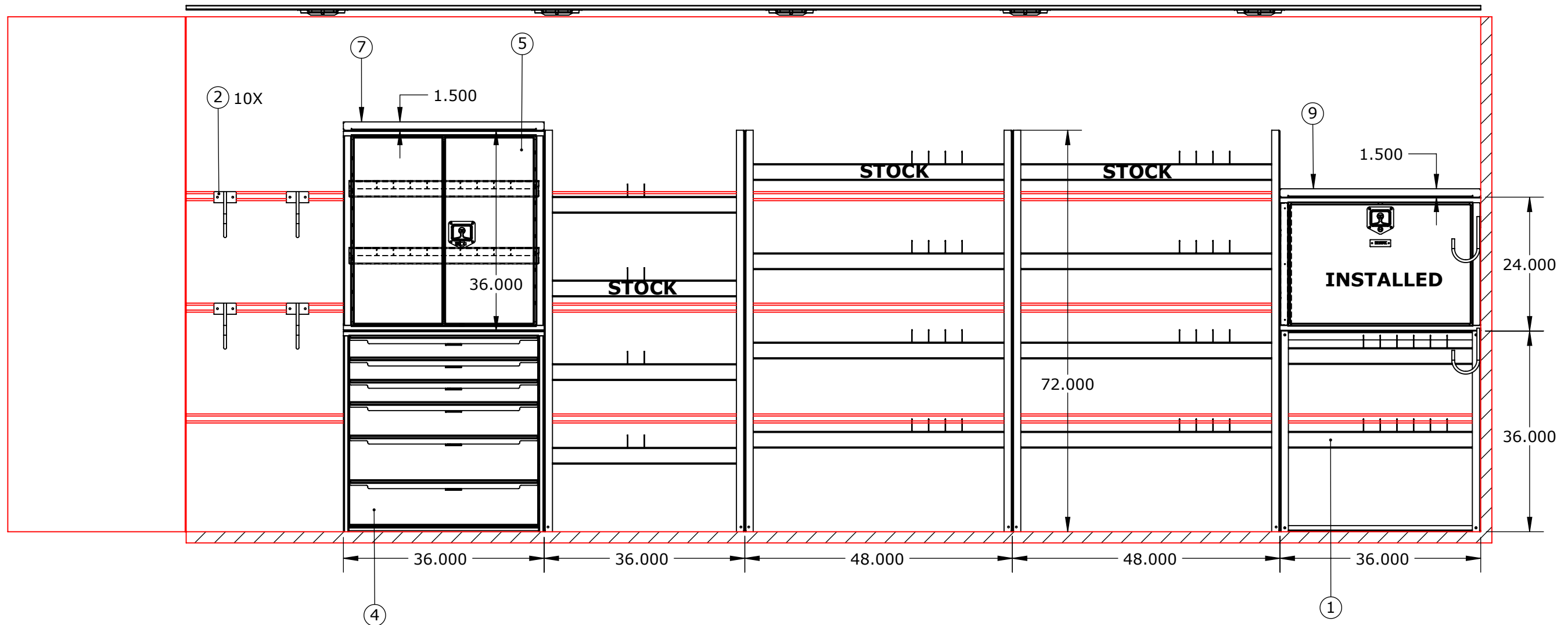
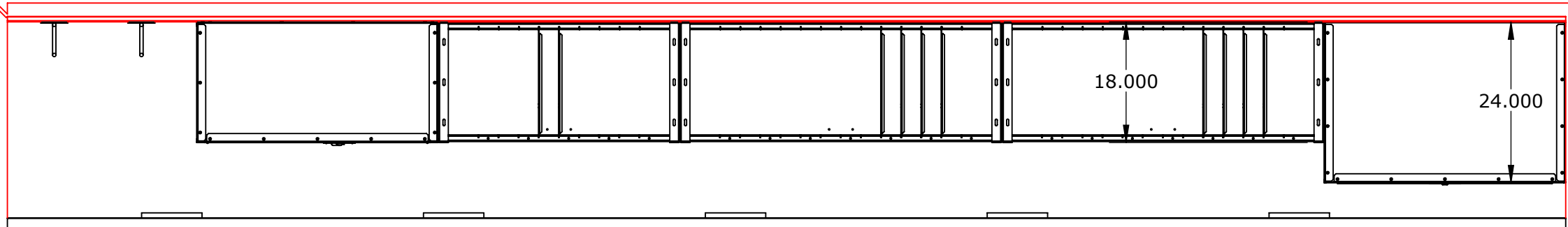
SIZE **B** REV **C1**

SCALE: 1:64 SHEET 2 OF 5

UNIT: IPS

Deburr All Edges

LEFT SIDE



T 630.994.3300
W ezstak.com

PART NO.
11150-A00

DESCRIPTION
UPFIT: 20' C-CAN

	NAME	DATE
DRAWN BY	VK	08/01/2023
REV BY		-
APPVD BY		

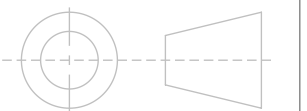
NOT RELEASED

PROPERTIES

MATERIAL:
THICKNESS:
WEIGHT: 6941.3762 LB
FINISH:
SIDES:

TOLERANCES UNLESS OTHERWISE SPECIFIED:

- X.X ±0.100"
- X.XX ±0.010"
- X.XXX ±0.010"
- X/X ±1/16"
- X° ±1°



DO NOT SCALE DRAWING

PROPRIETARY AND CONFIDENTIAL

THE INFORMATION CONTAINED IN THIS DRAWING IS THE SOLE PROPERTY OF EZSTAK LLC. ANY REPRODUCTION IN PART OR AS A WHOLE WITHOUT THE WRITTEN PERMISSION OF EZSTAK LLC IS PROHIBITED.

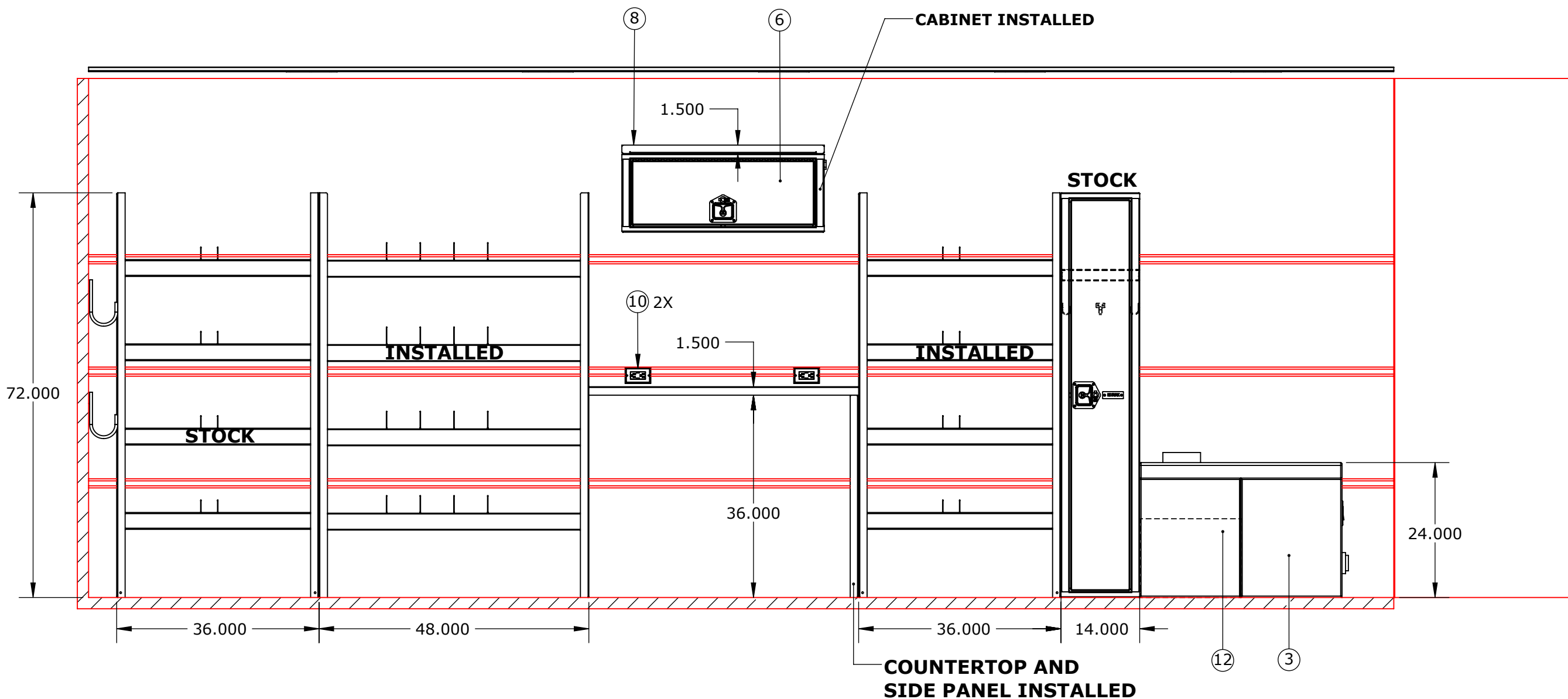
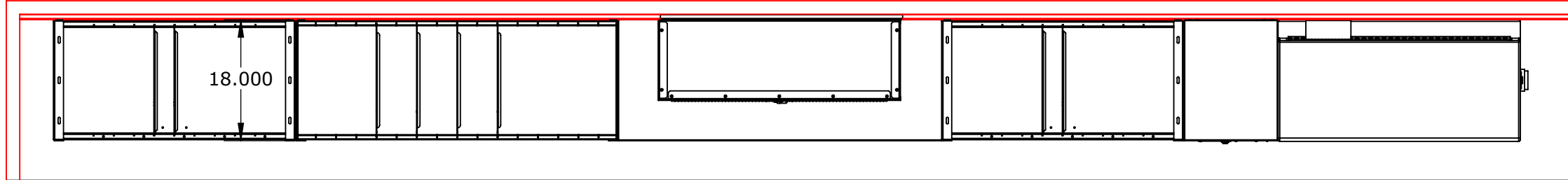
SIZE **B** REV **C1**

SCALE: 1:64 SHEET 3 OF 5

UNIT: IPS

Deburr All Edges

RIGHT SIDE



T 630.994.3300
W ezstak.com

PART NO.
11150-A00

DESCRIPTION
UPFIT: 20' C-CAN

	NAME	DATE
DRAWN BY	VK	08/01/2023
REV BY		-
APPVD BY		

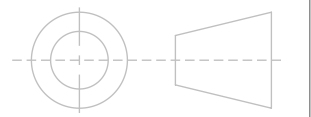
NOT RELEASED

PROPERTIES

MATERIAL:
THICKNESS:
WEIGHT: 6941.3762 LB
FINISH:
SIDES:

TOLERANCES UNLESS OTHERWISE SPECIFIED:

- X.X ±0.100"
- X.XX ±0.010"
- X.XXX ±0.010"
- X/X ±1/16"
- X° ±1°



DO NOT SCALE DRAWING

PROPRIETARY AND CONFIDENTIAL

THE INFORMATION CONTAINED IN THIS DRAWING IS THE SOLE PROPERTY OF EZSTAK LLC. ANY REPRODUCTION IN PART OR AS A WHOLE WITHOUT THE WRITTEN PERMISSION OF EZSTAK LLC IS PROHIBITED.

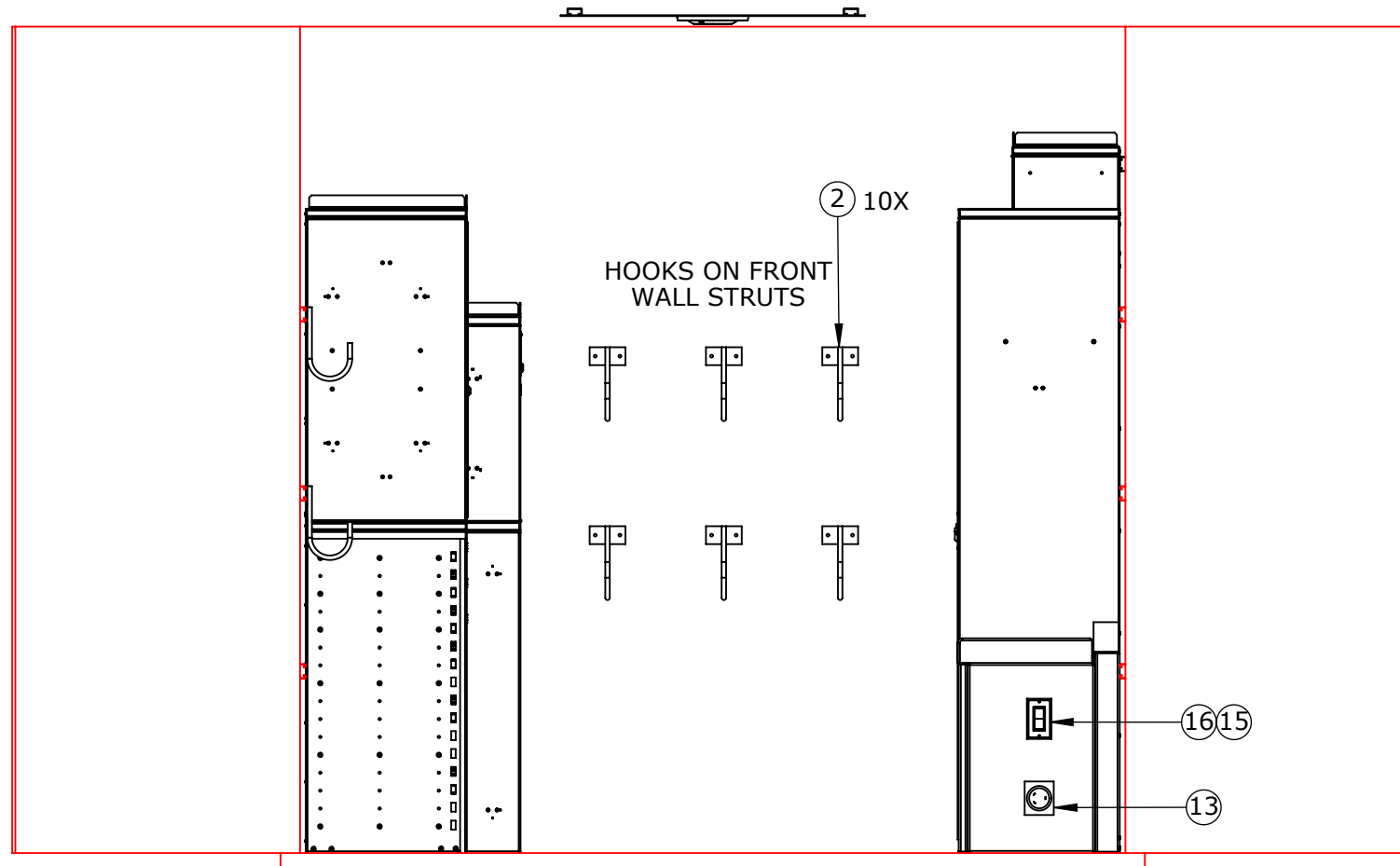
SIZE **B** REV **C1**

SCALE: 1:64 SHEET 4 OF 5

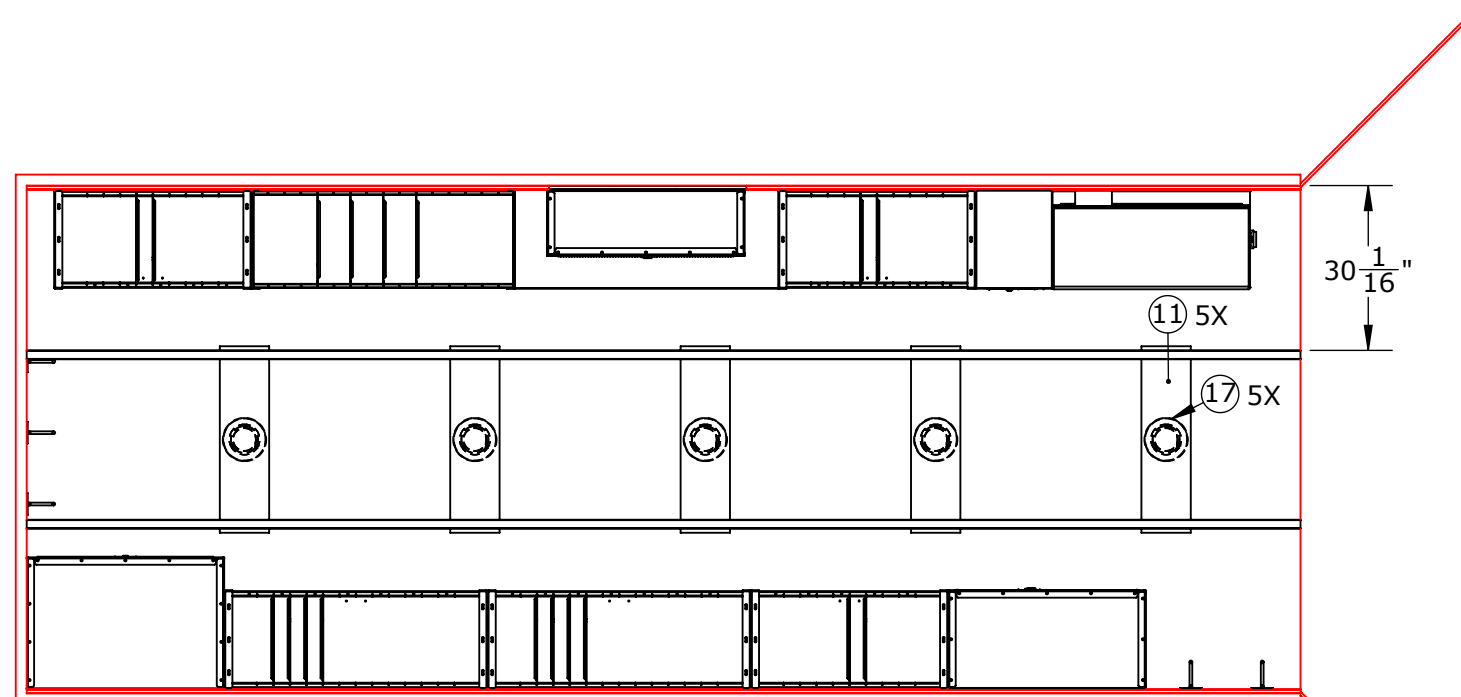
UNIT: IPS

Deburr All Edges

FRONT WALL



TOP DOWN VIEW



T 630.994.3300
W ezstak.com

PART NO.
11150-A00

DESCRIPTION
UPFIT: 20' C-CAN

	NAME	DATE
DRAWN BY	VK	08/01/2023
REV BY		-
APPVD BY		

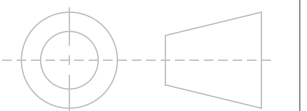
NOT RELEASED

PROPERTIES

MATERIAL:
THICKNESS:
WEIGHT: 6941.3762 LB
FINISH:
SIDES:

TOLERANCES UNLESS OTHERWISE SPECIFIED:

- X.X ± 0.100"
- X.XX ± 0.010"
- X.XXX ± 0.010"
- X/X ± 1/16"
- X° ± 1°



DO NOT SCALE DRAWING

PROPRIETARY AND CONFIDENTIAL

THE INFORMATION CONTAINED IN THIS DRAWING IS THE SOLE PROPERTY OF EZSTAK LLC. ANY REPRODUCTION IN PART OR AS A WHOLE WITHOUT THE WRITTEN PERMISSION OF EZSTAK LLC IS PROHIBITED.

SIZE **B** REV **C1**

SCALE: 1:64 SHEET 5 OF 5

UNIT: IPS

Deburr All Edges